



**BROADBAND
FOR ALL**

Broadband for All Roundtable

Tribal Governments

May 19, 2022





AGENDA

- Welcome
- Broadband for All Update
- Middle-Mile Broadband Initiative Update
- Last-Mile and Adoption Programs Update
- Affordable Connectivity Program Overview
- Federal Funding Programs Update
- Q & A

Welcome

Christina Snider

Tribal Advisor to the Governor

Dry Creek Rancheria Band of Pomo Indians

Chairman Bo Mazzetti

California Tribal Chairpersons Association

Tribal Chairman of the Rincon Band of Luiseño Indians

Darcie L. Houck

Commissioner

California Public Utilities Commission

Scott Adams

Deputy Director, Broadband & Digital Literacy

California Department of Technology

Access

Affordability

Adoption

Digital Equity and Inclusion

California Broadband Council



Executive Order N-73-20

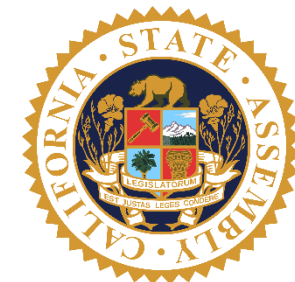


2020 Broadband Action Plan



2021 Middle-Mile Broadband Initiative

Multi-agency collaboration



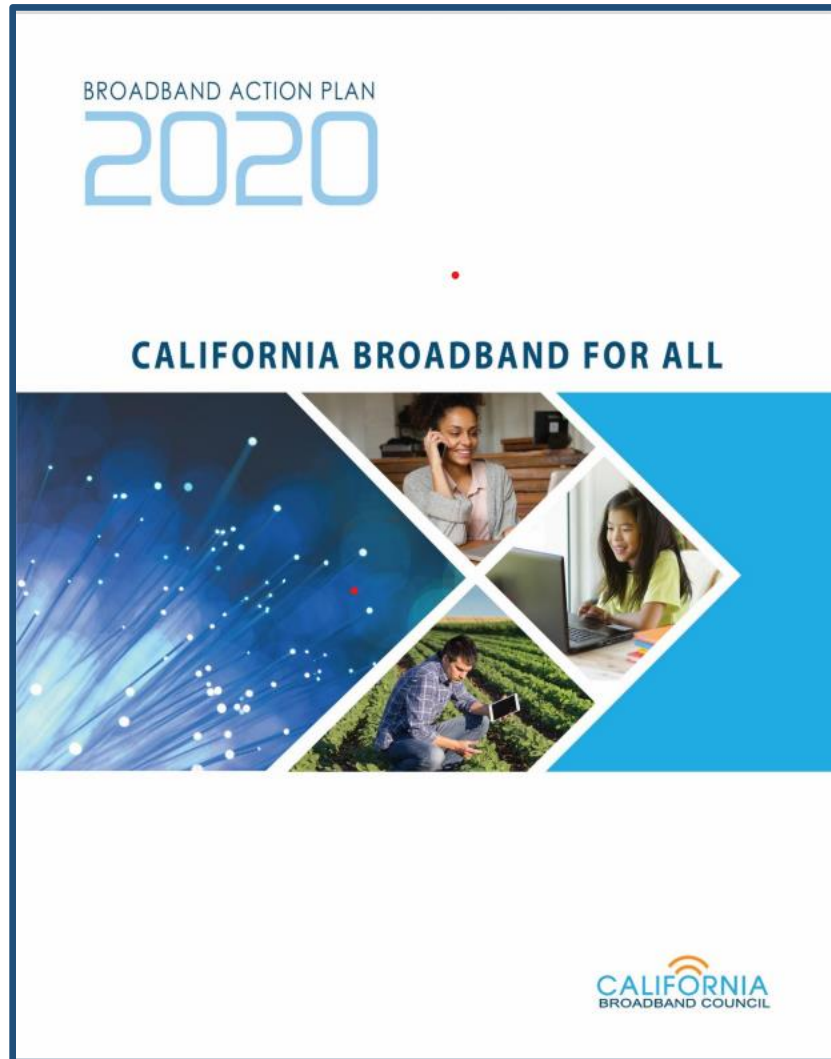
Required development of a California State Broadband Action Plan.



Specific direction on 15 items:

- Data and Mapping
- Funding
- Deployment
- Adoption

Broadband for All Action Plan



Goal 1: All Californians have high-performance broadband available at home, schools, libraries, and businesses.

Goal 2: All Californians have access to affordable broadband and necessary devices.

Goal 3: All Californians can access training and support to enable digital inclusion.

CDT Action Items

CDT oversees implementation of the Action Plan overall and leads 6 of its 24 Action Items.

#6

Enhance permitting processes at all levels of government

#7

Identify state property for possible use for broadband infrastructure

#14

Promote state contractual vehicles to support cost savings and efficient purchasing of broadband services and equipment.

#16

Promote, track, and publicly report the progress of adoption of affordable internet services and devices throughout the state.

#18

Develop multi-layer network of digital-inclusion stakeholders to discuss ongoing needs, share resources, and coordinate initiatives

#21

Establish Broadband For All portal to enable access to broadband information and tools and serve as a central repository.

Elizabeth Dooher

Caltrans Broadband Facilities Coordinator
Department of Transportation

Broadband for All Portal

Closing the digital divide

Broadband for All is California's commitment to closing the digital divide. Broadband is essential for vital services and opportunities, but millions of Californians still lack adequate broadband service or the devices and skills to use it.

Join us as we engage and support partners across the state to achieve Broadband for All.

[Learn more](#)



Broadband initiatives



[Broadband for All Action Plan](#)

In response to executive order N-73-20, the California Broadband Council developed the "Broadband for All" Action Plan with the understanding that broadband access, adoption, and training are essential components of digital equity.



[Middle-Mile Broadband Initiative](#)

In July 2021, Governor Newsom signed SB 156. This directed the California Department of Technology to develop a statewide, open-access middle-mile network. SB 156 provides \$3.25 billion to build the necessary infrastructure to bring internet connectivity to homes, businesses and community institutions.



[Last-Mile and Adoption Programs](#)

To complement the middle-mile network, SB 156 included \$2 billion to build last-mile infrastructure, provide funding for local agency technical assistance, and a loan loss reserve. The California Public Utilities Commission administers these along with a suite of existing programs that support broadband deployment, assistance, affordability, and adoption.

Mark Monroe

Deputy Director, Middle-Mile Broadband Initiative
California Department of Technology

SB 156 (Chapter 112, Statutes of 2021)

- \$6 billion investment over three years to:
 - Expand broadband infrastructure
 - Increase affordability
 - Enhance access to broadband for all Californians
- \$3.25 billion to develop, acquire, construct, maintain and operate a statewide “open-access **middle-mile**” network (CDT)
- \$2.75 billion for **last-mile** infrastructure grant programs (CPUC)

SB 156 (Chapter 112, Statutes of 2021)

- CDT oversees the acquisition and management of contracts for the development, acquisition, construction, maintenance, and operation of statewide open-access middle-mile broadband network
- Establish a Single Point of Contact: Deputy Director, Middle-Mile Broadband Initiative
- Establish Middle-Mile Advisory Committee to monitor project
- Retain Third Party Administrator

Working together to achieve SB 156



California Department of Technology

- Program, fund management, reporting and oversight
- Retain TPA
- In collaboration with TPA and CPUC, facilitate high speed broadband access through last-mile connectivity



California Public Utilities Commission

- Provide data to identify unserved & underserved areas
- Facilitate public comment
- Recommend network placement



Third Party Administrator

- Manages the development, acquisition, construction, maintenance and operation of the statewide open-access middle-mile broadband network



Caltrans

- Leverage existing transportation projects
- Oversee acquisition and management of construction contracts for open-access middle-mile broadband network



Department of Finance

- Budget oversight and facilitation
- State and Local Fiscal Recovery Funds (SLFRF) quarterly reporting to the federal government

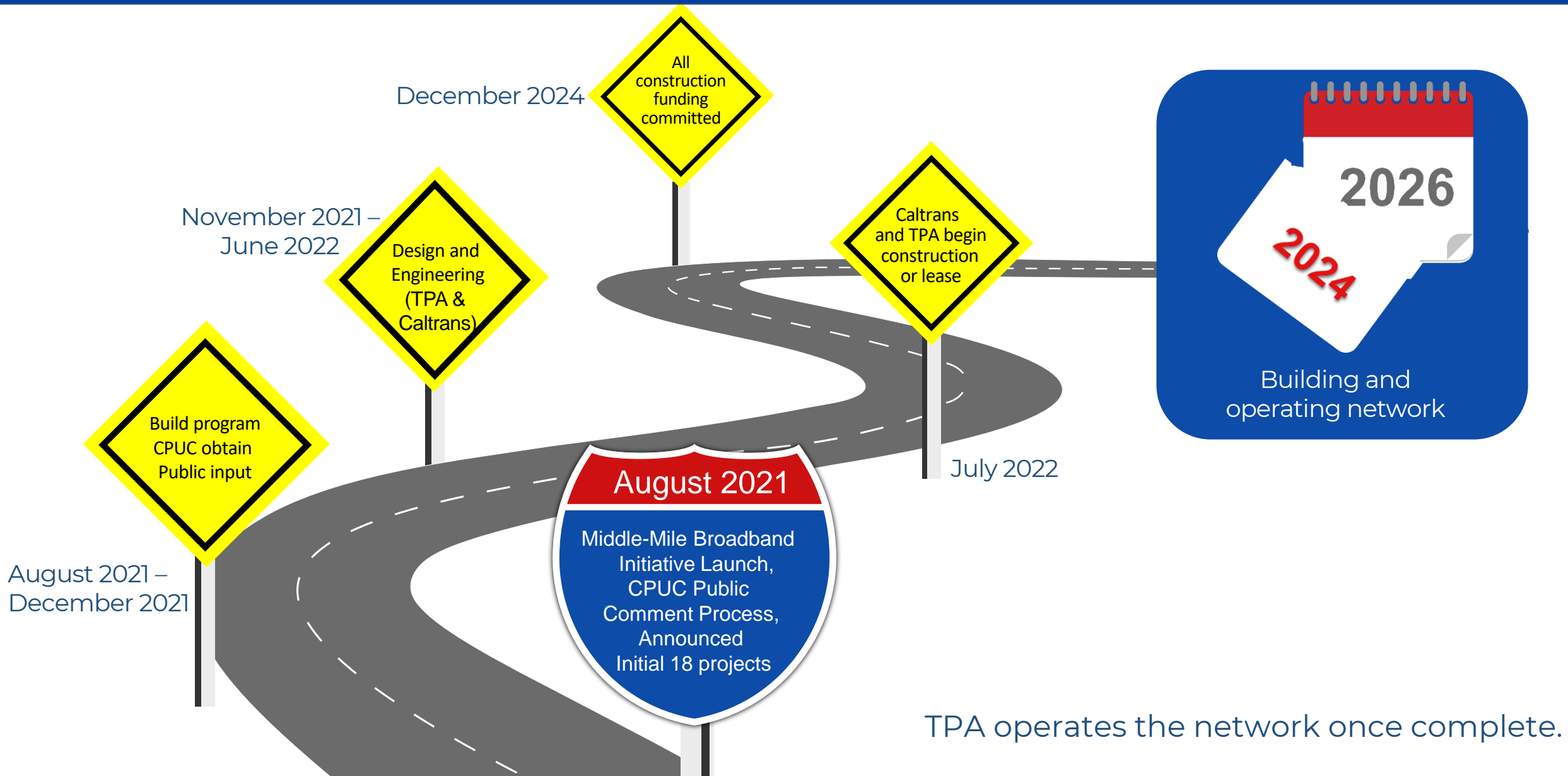
Guiding Principles

- 1** Provide affordable, open-access, middle-mile broadband infrastructure to enable last-mile network connectivity throughout the state.

- 2** Build the network expeditiously, leveraging existing infrastructure, networks, and construction projects, where feasible.

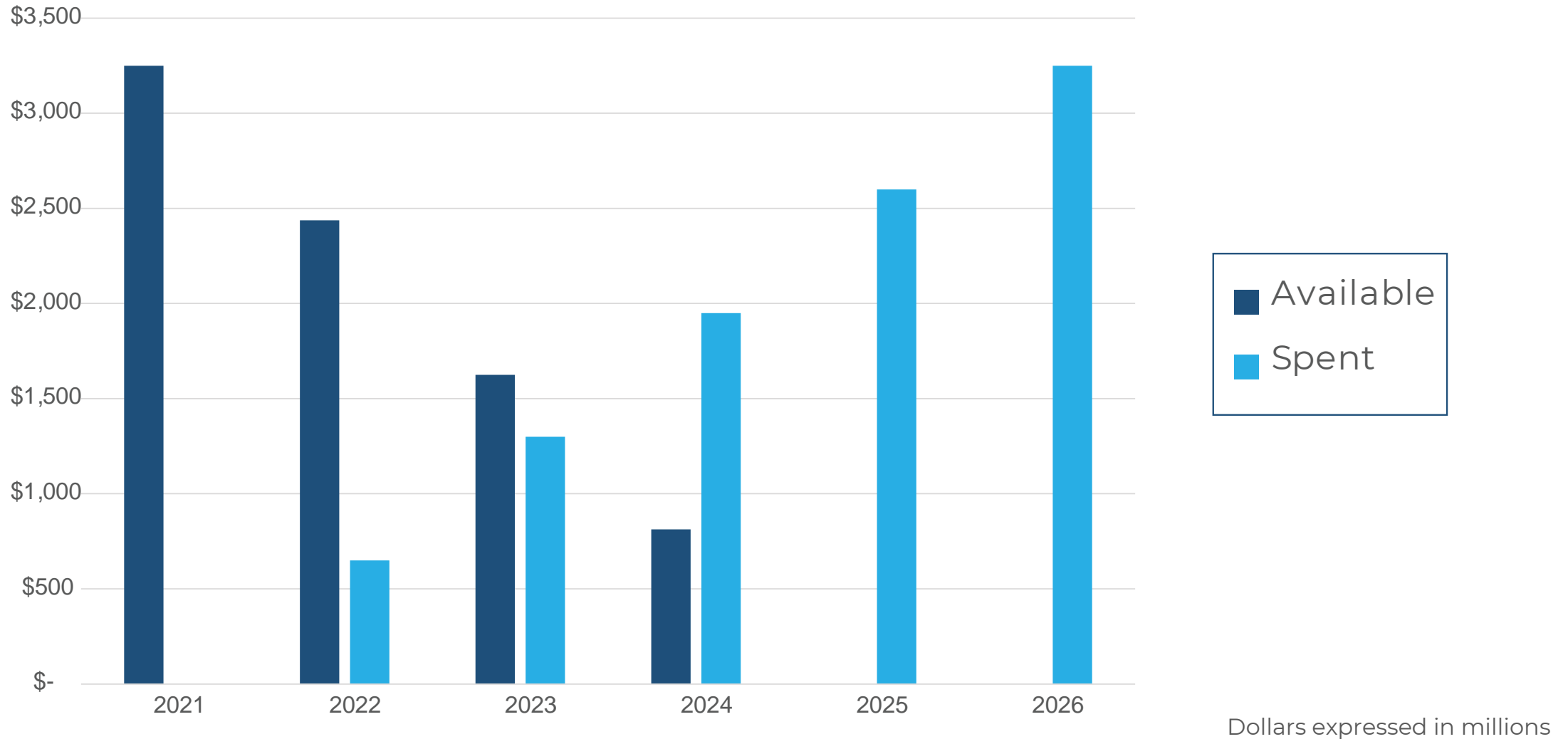
- 3** Prioritize connectivity to unserved and underserved communities, including community institutions.

Middle-Mile Broadband Initiative Timeline



Expenditure Plan

Middle-Mile Broadband Initiative (MMBI)
Cumulative Expenditure Pattern



Federal Funding Rules

The \$3.25 billion MMBI project is funded entirely from American Rescue Plan Act (ARPA) funding.

- ARPA funds must be encumbered by December 2024.
- ARPA expenditures must be liquidated, and the MMBI project completed, by December 2026.
- The \$3.25 billion in ARPA funding is estimated to be enough to build approximately 6,000 miles of the 8,000-mile system. SB 156 provides for the remainder of the system to be developed using leases of existing infrastructure.

Erik Hunsinger

Vice President of Infrastructure
GoldenStateNet

Matt Rantanen

Senior Advisor, Tribal Broadband
GoldenStateNet
Cree, Director of Technology, SCTCA



GOLDENSTATENET

Statewide Middle-Mile Network Design

May 19, 2022 (MMAC Abridged)

Design Process

- Analyzed extensive mapping resources to understand: existing technical and telecom assets, road and highway systems, topological factors, socioeconomic composition by region, broadband speeds (or lack thereof) by region, among other factors.
- Used CPUC middle-mile recommendation routes as anchors for most route solutions adding regional rings.
- Engaged with a diverse set of community groups to understand needs, requirements, existing assets, and potential opportunities.
- Engaged service providers (carriers, vendors, ISPs, etc) to examine potential solution sets.
- Integrated proposed 18 projects into the initial statewide network recommendation.
- Identified regions where the unserved population is >50 miles from current design to build fiber paths where feasible.
- Estimated the cost for building proposed routes in preparation for an optimization analysis.

Design Factors

- Primarily utilize new fiber-optic cable construction where feasible (Caltrans Right of Way).
- Seek joint build partnerships to reduce costs to the state and to partners.
- Use long-term Dark Fiber IRUs where appropriate to reduce cost, time to service, and to add resiliency.
- Align to organizations with existing regional, state, and federal broadband infrastructure funding to maximize investments, e.g. CASF-funded organizations.
- Aim for “early wins” to meet expectations of residents, policymakers, and other stakeholders.
- Utilize well-established best practices in network design principles, protocols, engineering, and operation.

Support for Optimization Process

Inform CDT to enable partner-based optimization and application of available budget. This includes:

- Providing comprehensive information to drive decision-making for Build vs. Buy vs. Joint Build
- Working with CDT to determine contingency reserve percentage against \$3.2B budget (typically 10-20%)

Steps to achieving optimization:

- Show total routes, mileage, and projected cost of statewide Middle Mile Network that would be 100% newly-built fiber, including required equipment and facilities
- Determine newly-built routes that are *no regrets* and most *feasible* within available budget
- Determine routes for dark fiber IRUs within remaining budget
- In addition, determine joint-build portions of MM network within remaining budget

Final CDT decisions for all MM network segments within \$3.2B budget (minus contingency):

- 18 Initial Projects
- Newly built fiber routes
- Dark Fiber IRU routes
- Joint build routes
- Equipment and facilities

STATEWIDE MAP

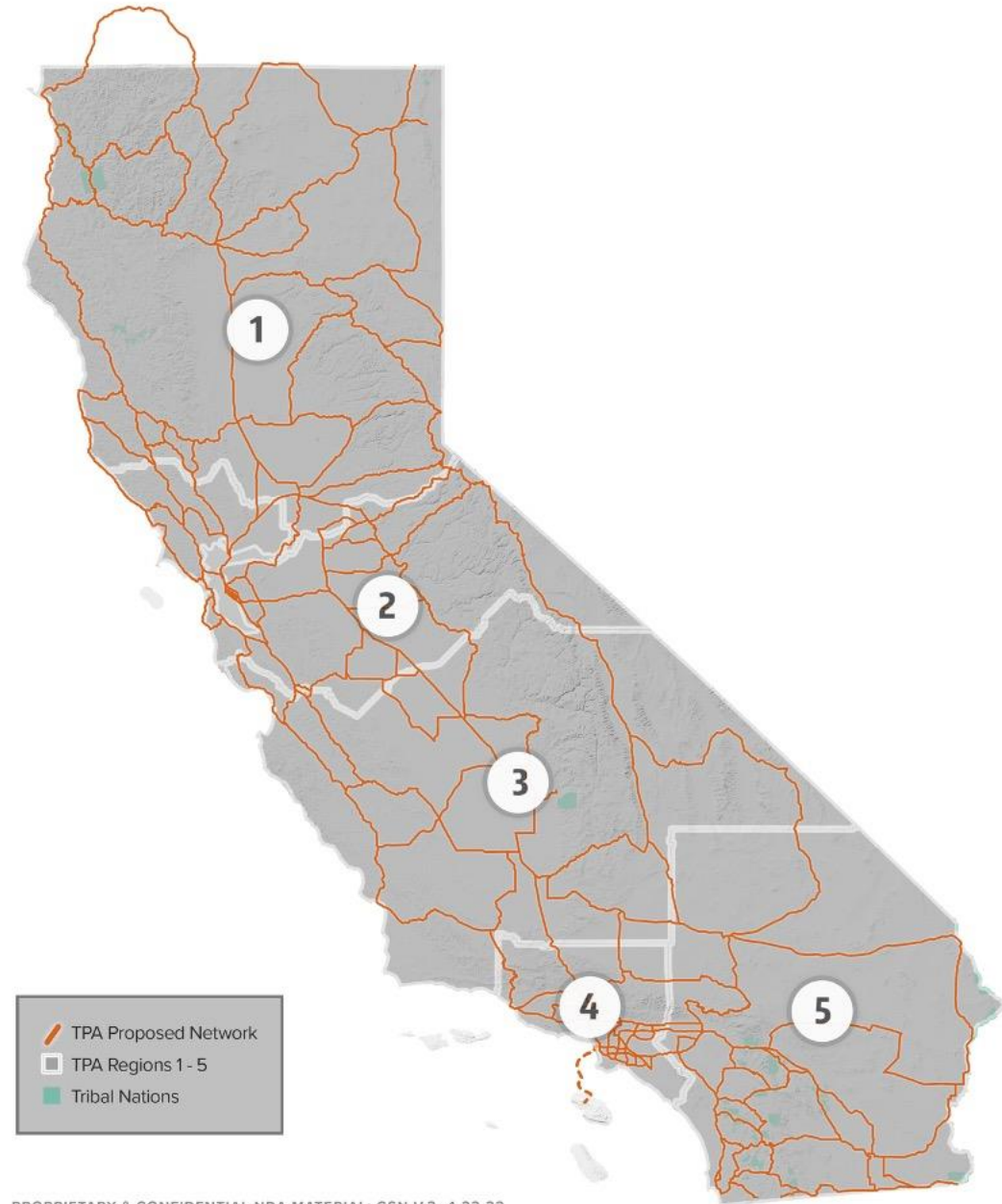
Region 1: Caltrans Districts 1, 2, 3

Region 2: Caltrans Districts 4, 9 (portion), 10

Region 3: Caltrans Districts 5, 6, 9 (portion)

Region 4: Caltrans Districts 7, 12

Region 5: Caltrans Districts 8, 11



REGION 1: KEY HIGHLIGHTS

Geographic/Environmental:

- Vastly underserved area of the state
- Prone to catastrophic outages, fire hazard zone

Population:

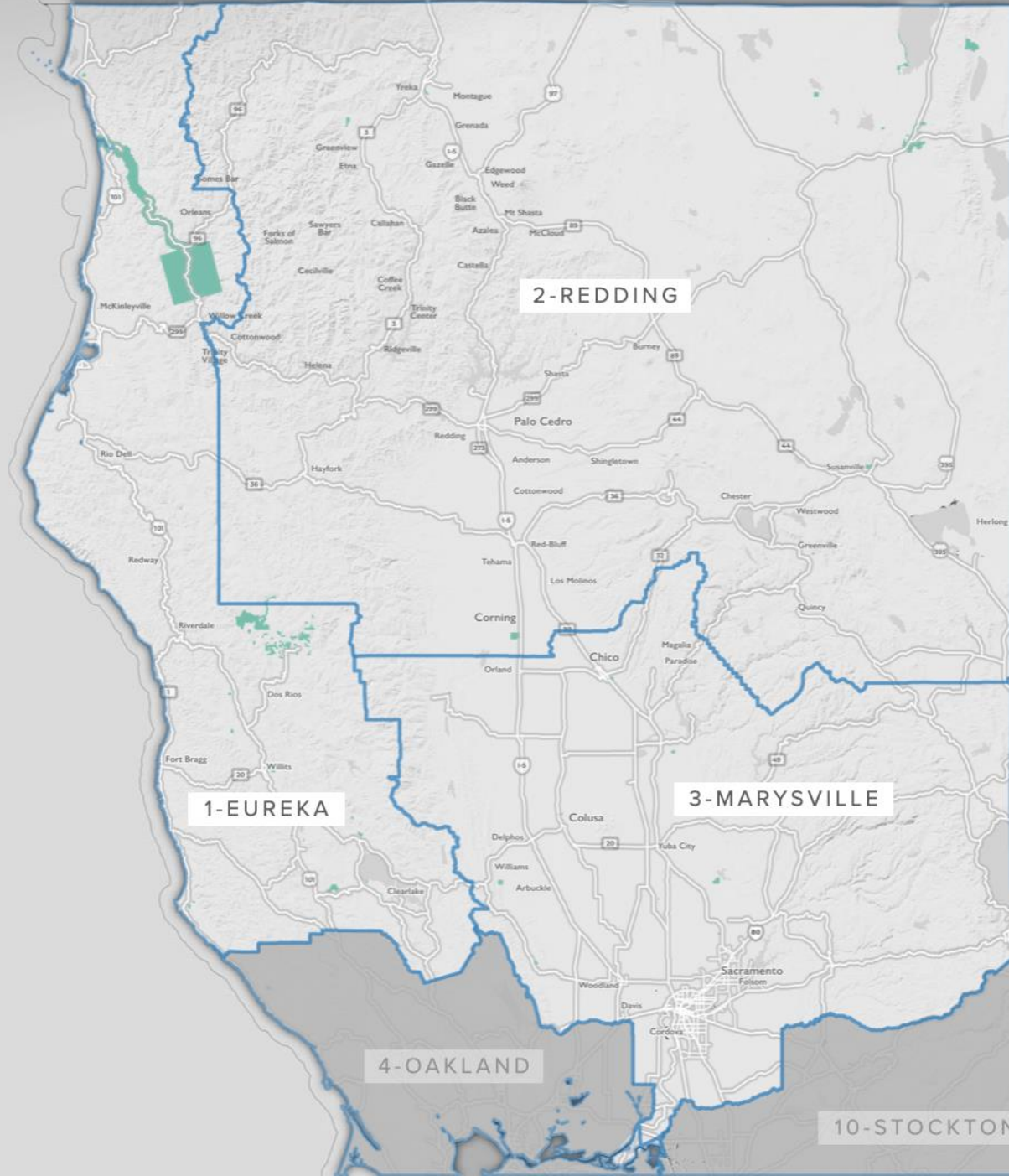
- Includes California's two largest Tribal Nations: Hoopa Valley Tribe and Yurok Tribe

Technical/Business-related:









- First collaborative effort with a small local exchange carrier - Siskiyou Telephone
- Opportunity for cooperation and collaboration with Tribal Nations to build resiliency and connectivity within the region.
- Minimal availability of existing fiber to support IRUs.

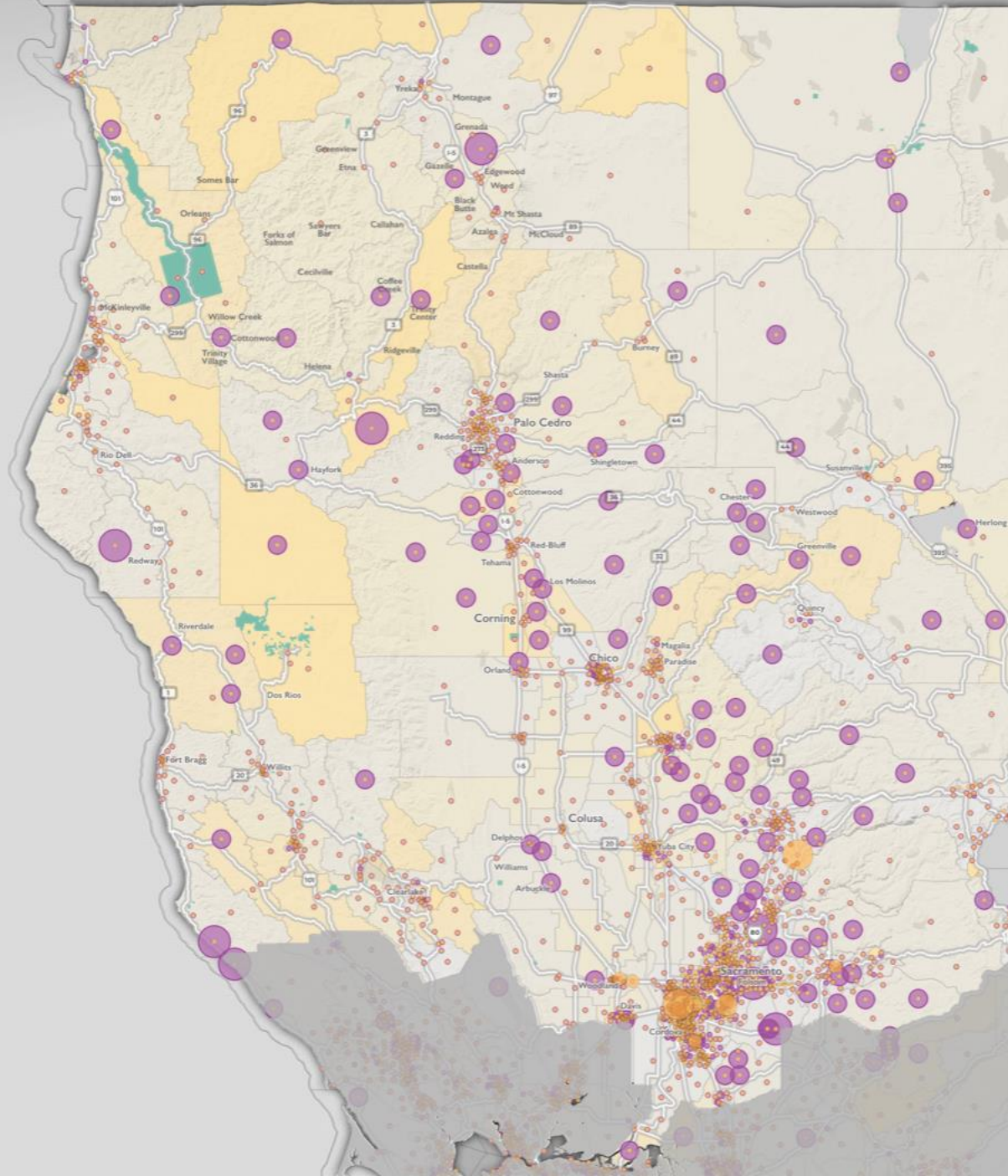
REGION 1

- State & National Highways
- Tribal Nations
- Caltrans Districts



LEGEND

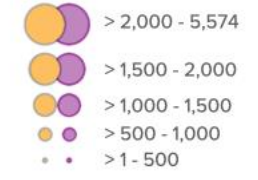
-  State & National Highways
-  Tribal Nations
-  Caltrans Districts
-  Initial 18 TPA Projects
-  CalREN Backbone
-  Recommended Hut Locations
-  TPA Proposed Network
-  CPUC Anchor Builds



REGION 1

- CPUC Unserved Residential & Non-Residential
- Percent Households Below Poverty Line

Unserved Residential & Unserved Non-Residential



Percent Households Below Poverty Line

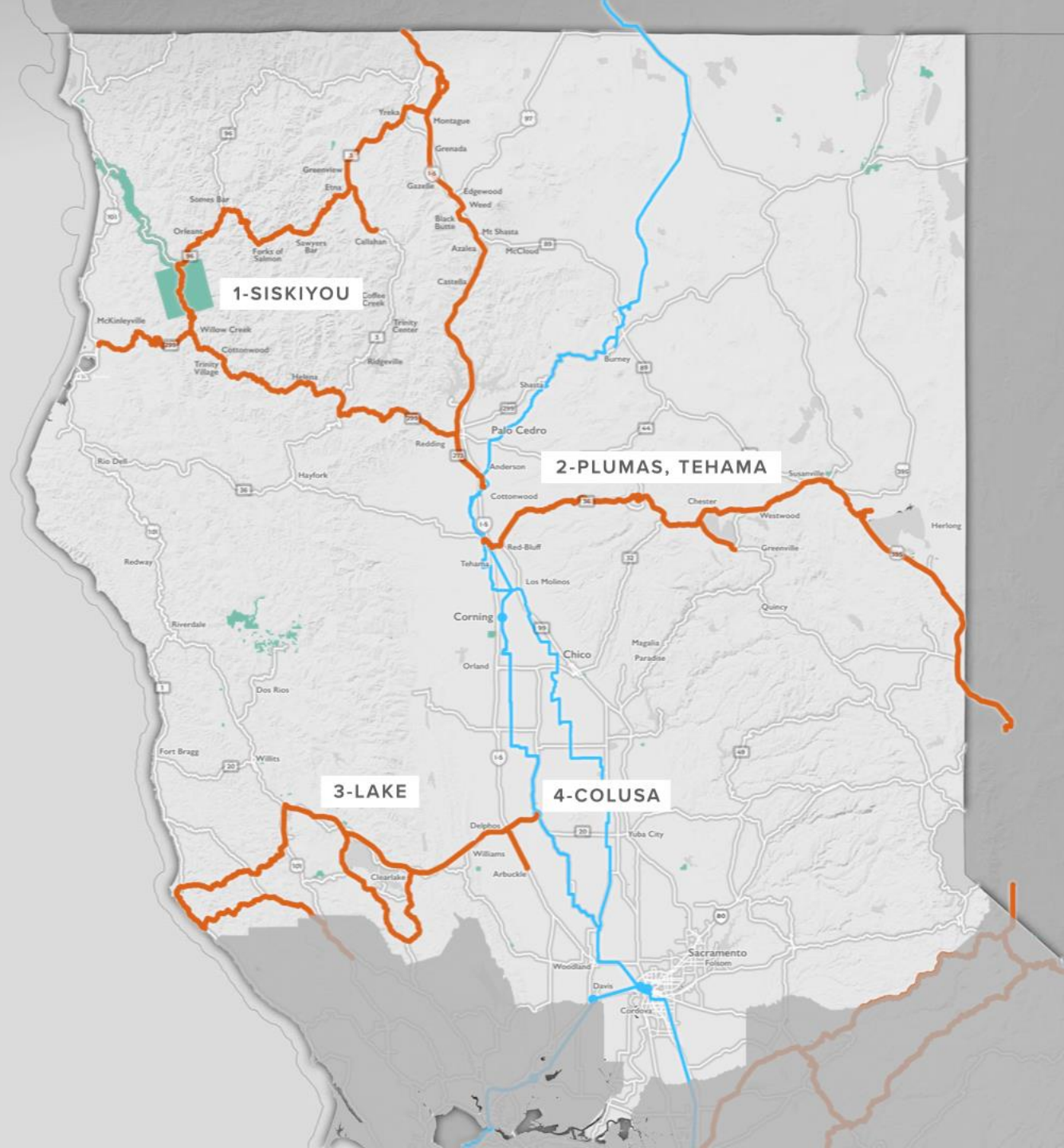
Census tract data from U.S. Census Bureau's American Community Survey (ACS) - 2015-2019 5-year estimates

- ### LEGEND
- State & National Highways
 - Tribal Nations
 - Caltrans Districts
 - Initial 18 TPA Projects
 - CalREN Backbone
 - Recommended Hut Locations
 - TPA Proposed Network
 - CPUC Anchor Builds



REGION 1

- Initial TPA Projects - 1/31/22
- CalREN Backbone

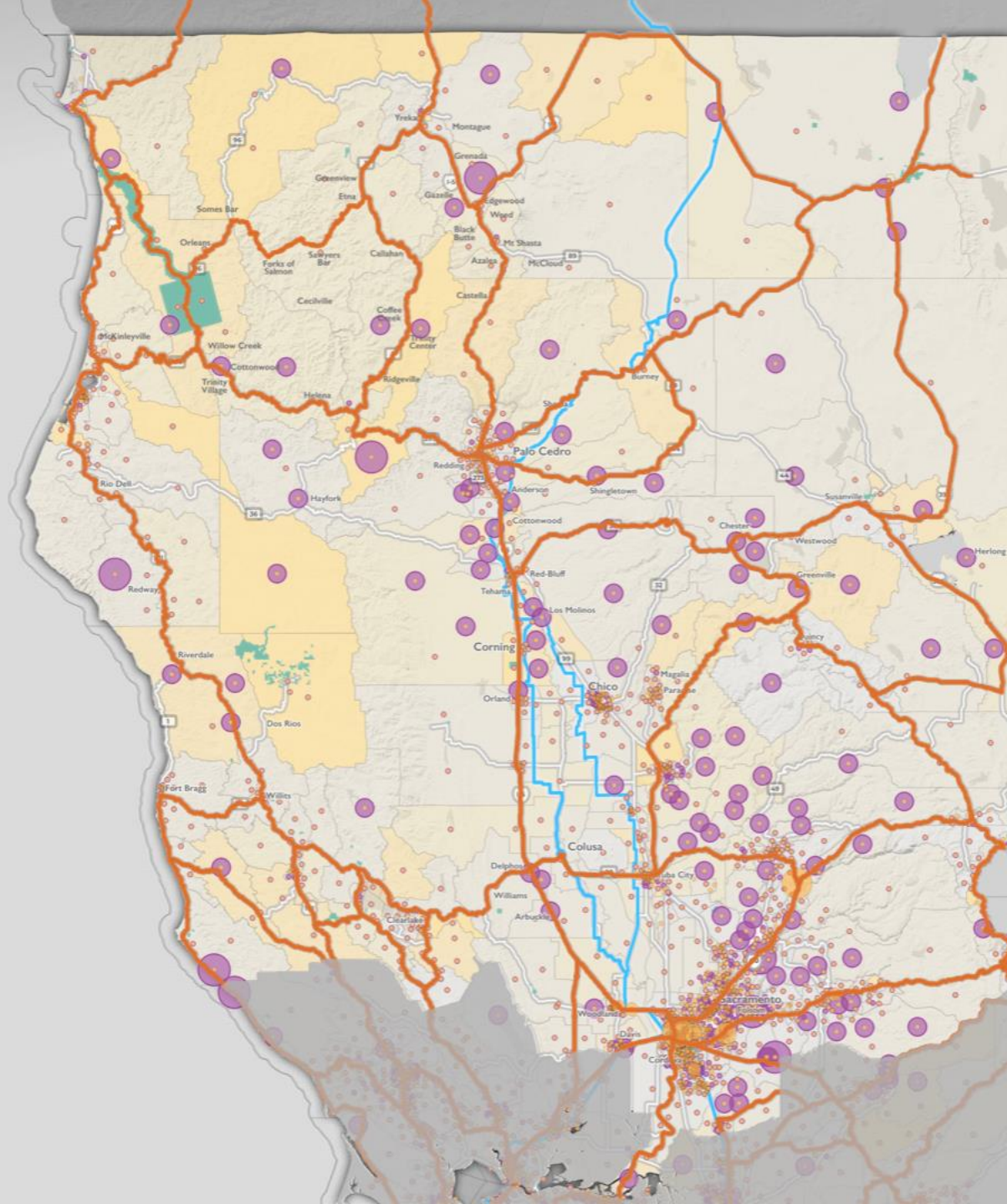


LEGEND

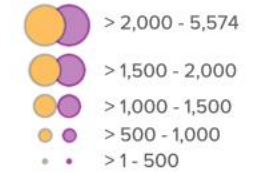
- State & National Highways
- Tribal Nations
- Caltrans Districts
- Initial 18 TPA Projects
- CalREN Backbone
- Recommended Hut Locations
- TPA Proposed Network
- CPUC Anchor Builds

REGION 1

- TPA Proposed Network
- CPUC Unserved Residential & Non-Residential
- Percent Households Below Poverty Line



Unserved Residential & Unserved Non-Residential



Percent Households Below Poverty Line

Census tract data from U.S. Census Bureau's American Community Survey (ACS) - 2015-2019 5-year estimates

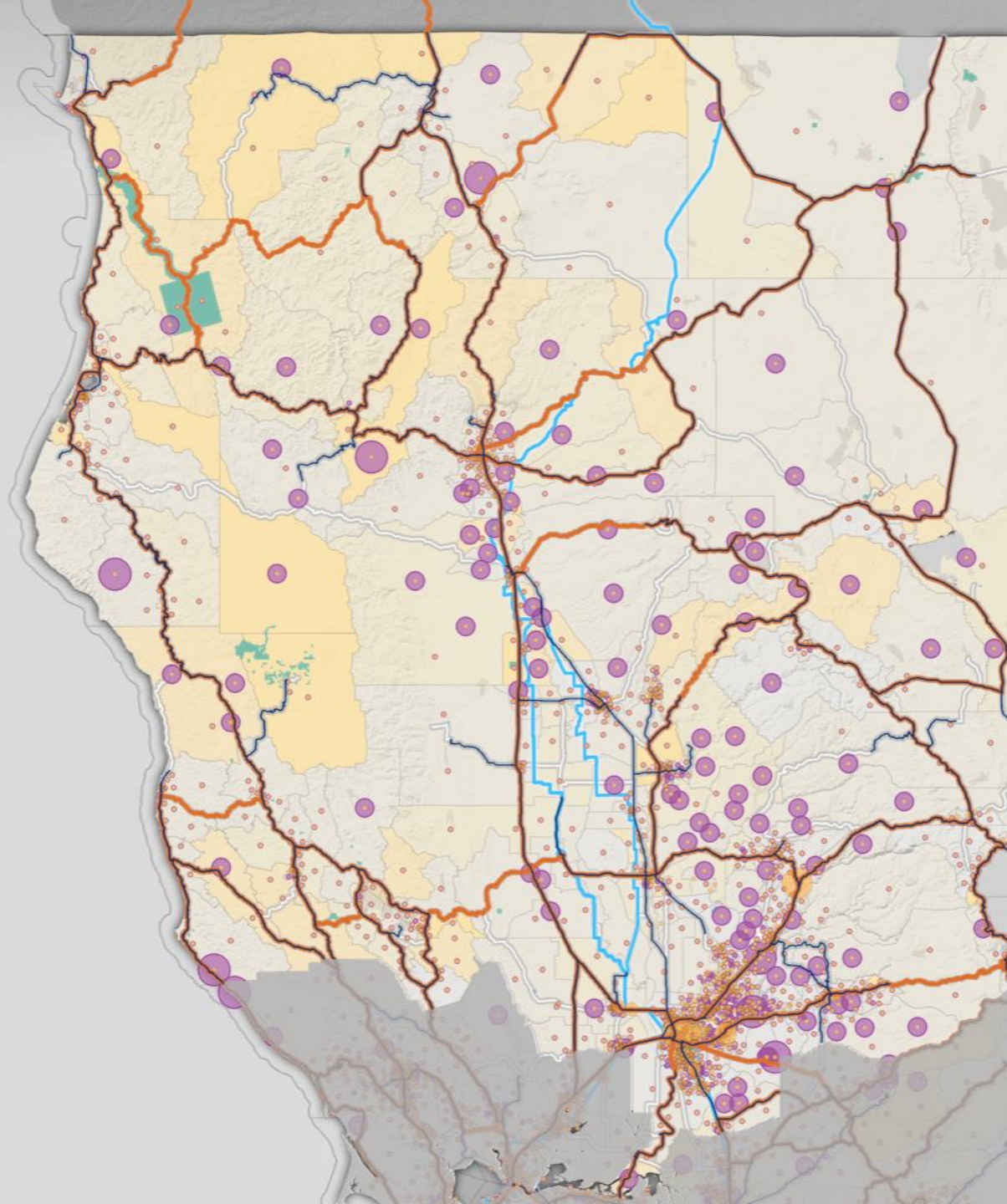
LEGEND

- State & National Highways
- Tribal Nations
- Caltrans Districts
- Initial 18 TPA Projects
- CalREN Backbone
- Recommended Hut Locations
- TPA Proposed Network
- CPUC Anchor Builds

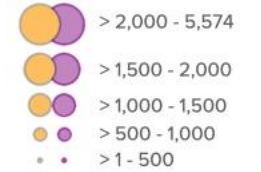


REGION 1

- TPA Proposed Network
- CPUC Unserved Residential & Non-Residential
- Percent Households Below Poverty Line
- CPUC Anchor Builds



Unserved Residential & Unserved Non-Residential



Percent Households Below Poverty Line

Census tract data from U.S. Census Bureau's American Community Survey (ACS) - 2015-2019 5-year estimates

LEGEND

- State & National Highways
- Tribal Nations
- Caltrans Districts
- Initial 18 TPA Projects
- CalREN Backbone
- Recommended Hut Locations
- TPA Proposed Network
- CPUC Anchor Builds



REGION 2: KEY HIGHLIGHTS

Geographic/Environmental:

- Includes densely populated urban areas and sparsely populated mountainous regions.
- Certain areas considered high risk fire hazard zones.

Population:

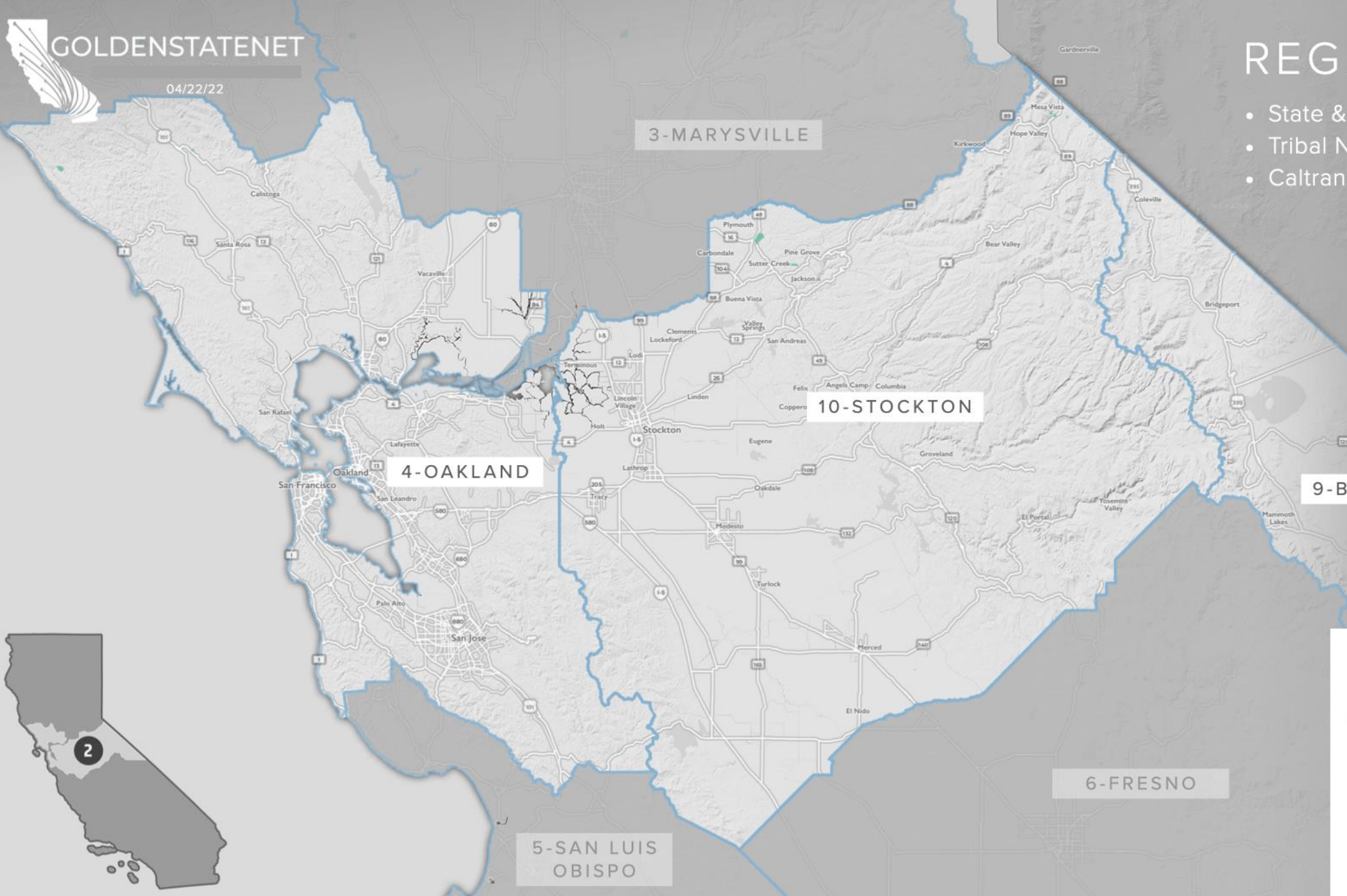
- Service affordability will be key due to socioeconomic factors in parts of the region.

Technical/Business-related:

- Significant joint build opportunities.
- May require further analysis with federal partners on some routes.
- Varies from CPUC recommendations in a few locations.
- Eastern parts of the region lack Caltrans ROW and may require further evaluation.

REGION 2

- State & National Highways
- Tribal Nations
- Caltrans Districts

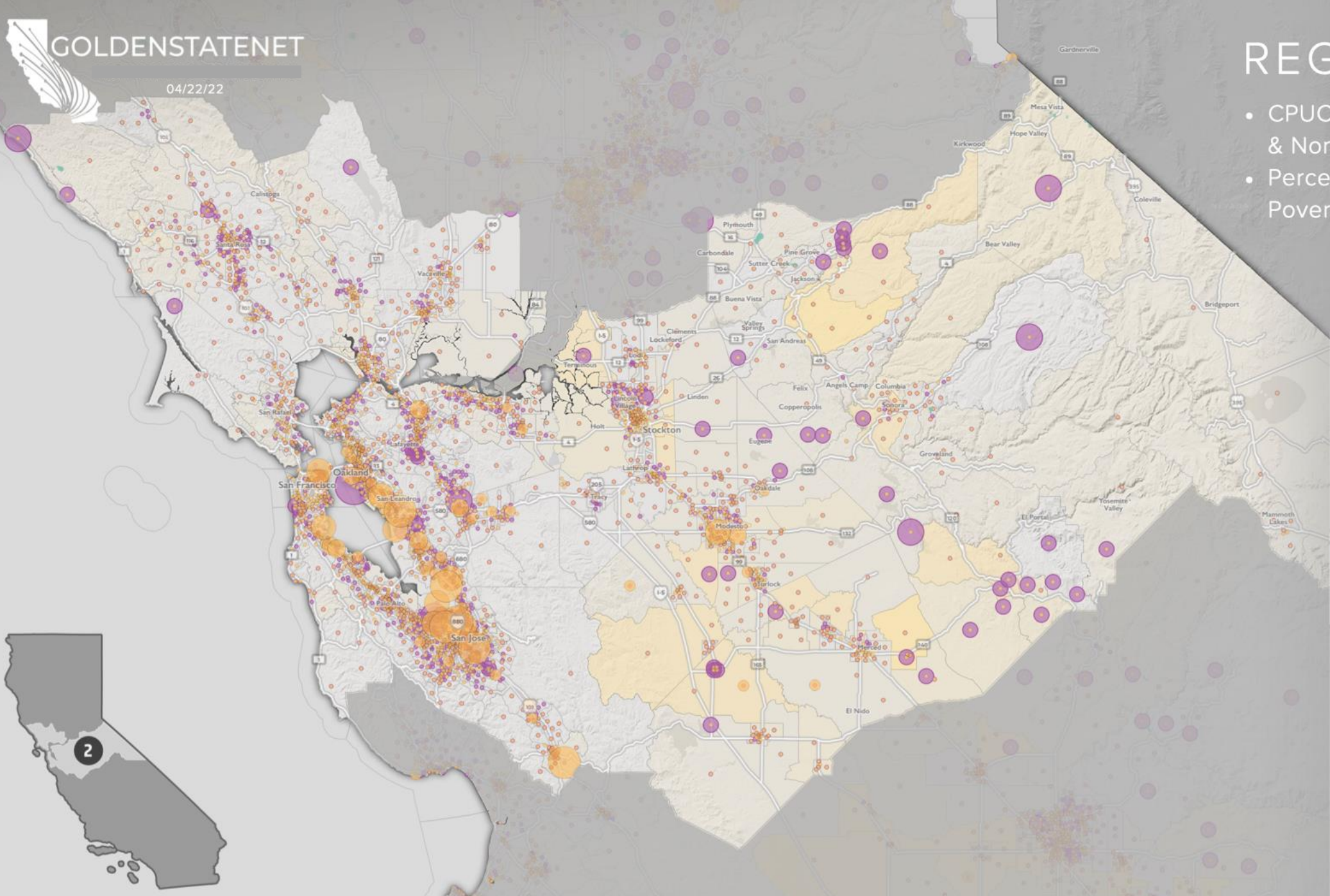


LEGEND

- State & National Highways
- Tribal Nations
- Caltrans Districts
- Initial 18 TPA Projects
- CalREN Backbone
- Recommended Hut Locations
- TPA Proposed Network
- CPUC Anchor Builds

REGION 2

- CPUC Unserved Residential & Non-Residential
- Percent Households Below Poverty Line



Unserved Residential & Unserved Non-Residential

- > 2,000 - 5,574
- > 1,500 - 2,000
- > 1,000 - 1,500
- > 500 - 1,000
- > 1 - 500



Percent Households Below Poverty Line

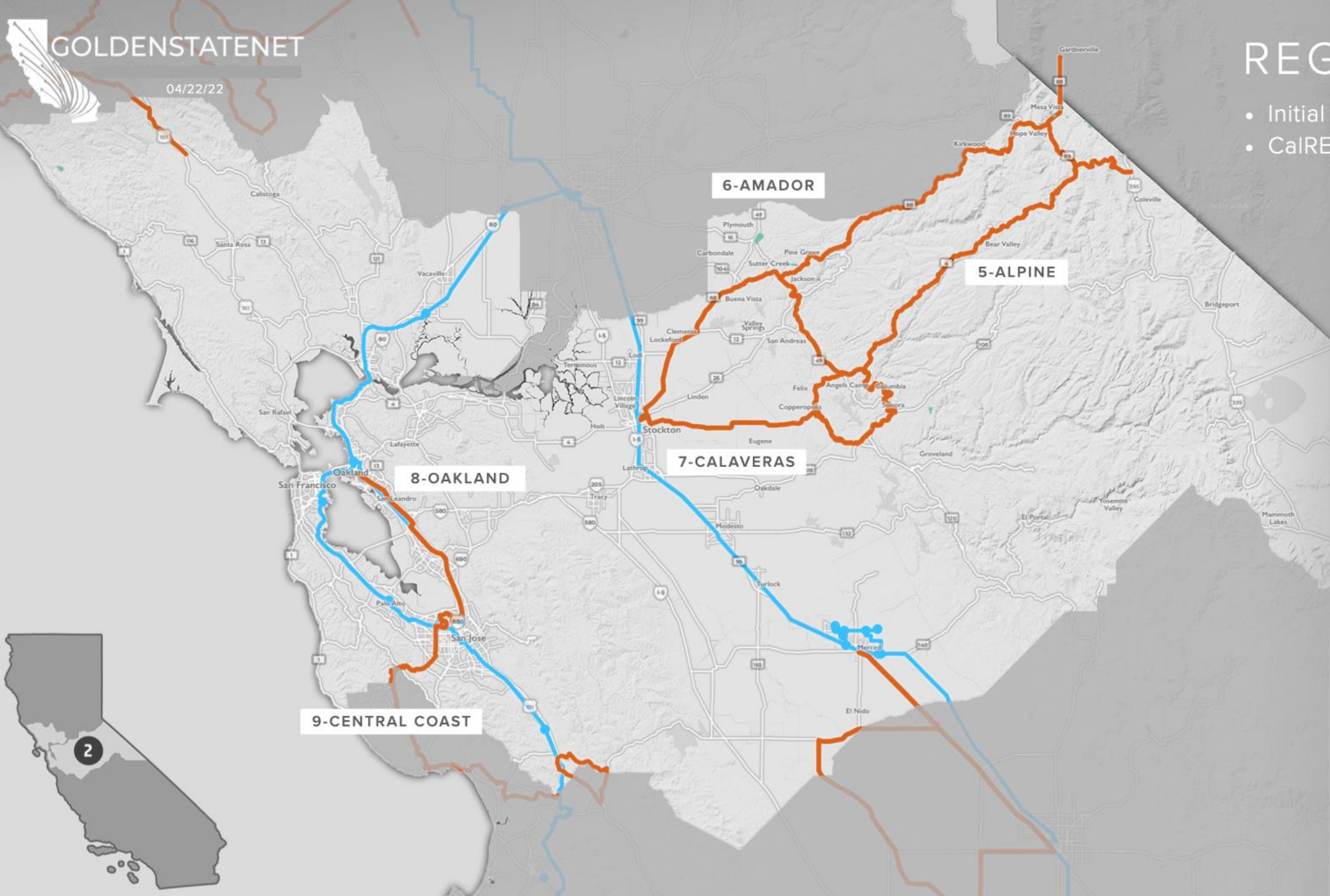
Census tract data from U.S. Census Bureau's American Community Survey (ACS) - 2015-2019 5-year estimates

LEGEND

- State & National Highways
- Tribal Nations
- Caltrans Districts
- Initial 18 TPA Projects
- CalREN Backbone
- Recommended Hut Locations
- TPA Proposed Network
- CPUC Anchor Builds

REGION 2

- Initial TPA Projects - 1/31/22
- CalREN Backbone



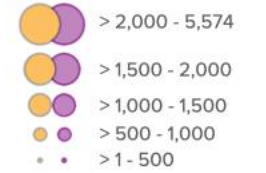
LEGEND

- State & National Highways
- Tribal Nations
- Caltrans Districts
- Initial 18 TPA Projects
- CalREN Backbone
- Recommended Hut Locations
- TPA Proposed Network
- CPUC Anchor Builds

REGION 2

- TPA Proposed Network
- CPUC Unserved Residential & Non-Residential
- Percent Households Below Poverty Line

Unserved Residential & Unserved Non-Residential



Percent Households Below Poverty Line

Census tract data from U.S. Census Bureau's American Community Survey (ACS) - 2015-2019 5-year estimates

LEGEND

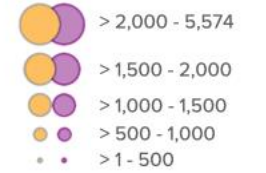
- State & National Highways
- Tribal Nations
- Caltrans Districts
- Initial 18 TPA Projects
- CalREN Backbone
- Recommended Hut Locations
- TPA Proposed Network
- CPUC Anchor Builds



REGION 2

- CPUC Anchor Builds
- TPA Proposed Network
- CPUC Unserved Residential & Non-Residential
- Percent Households Below Poverty Line

Unserved Residential & Unserved Non-Residential



Percent Households Below Poverty Line

Census tract data from U.S. Census Bureau's American Community Survey (ACS) - 2015-2019 5-year estimates

LEGEND

- State & National Highways
- Tribal Nations
- Caltrans Districts
- Initial 18 TPA Projects
- CalREN Backbone
- Recommended Hut Locations
- TPA Proposed Network
- CPUC Anchor Builds



REGION 3: KEY HIGHLIGHTS

Geographic/Environmental:

- Includes densely populated urban areas and sparsely populated mountainous regions.
- Certain areas considered high risk fire hazard zones.

Population:

- Forthcoming opportunities for Tule River Tribal Nation with ongoing engagement.
- Service affordability will be key due to socioeconomic factors in parts of the region.

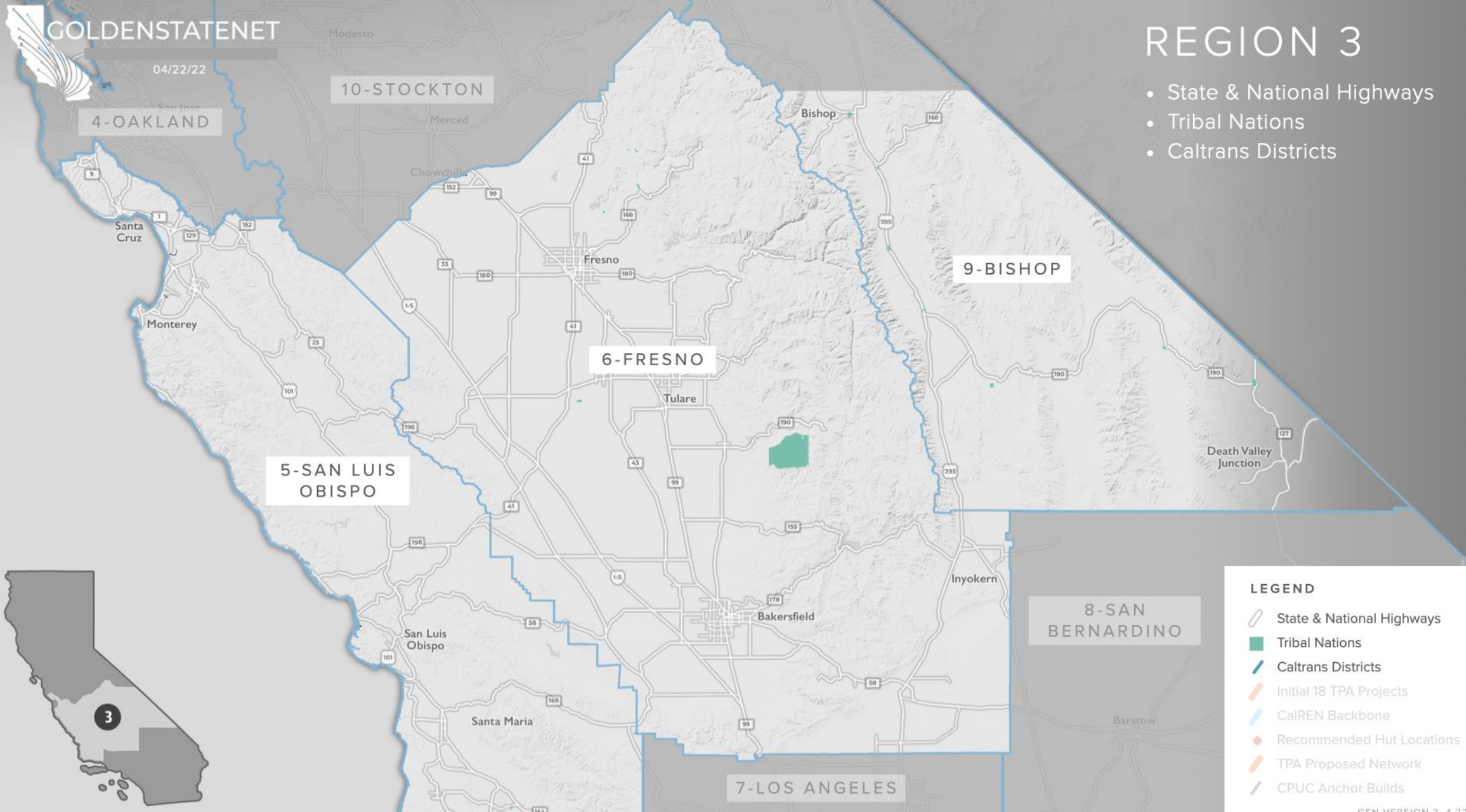
Technical/Business-related:

- Significant joint build opportunities.
- Existing commercial infrastructure for IRU potential solutions.
- Eastern parts of the region lack Caltrans ROW and may require further evaluation.

04/22/22

REGION 3

- State & National Highways
- Tribal Nations
- Caltrans Districts



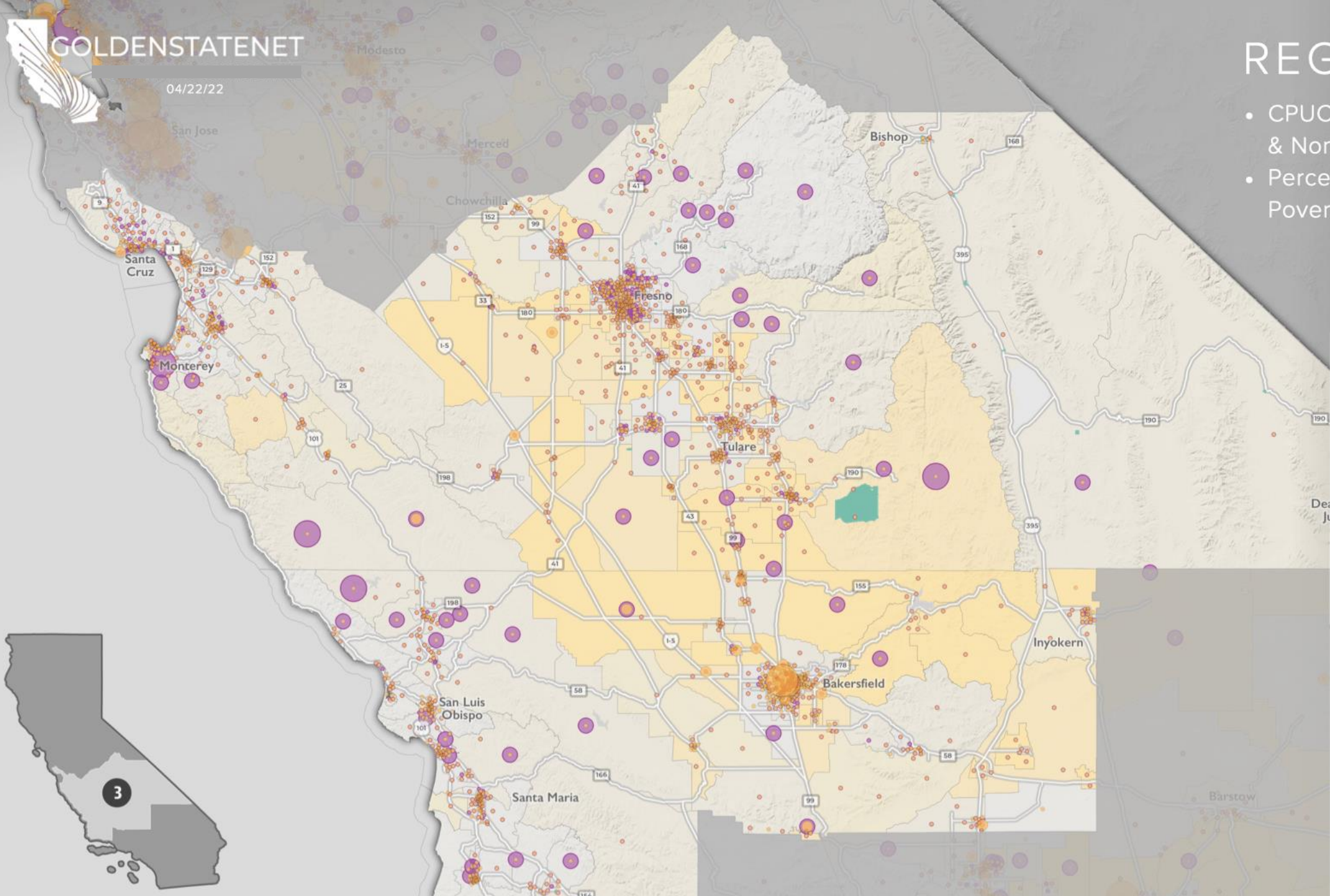
LEGEND

- State & National Highways
- Tribal Nations
- Caltrans Districts
- Initial 18 TPA Projects
- CalREN Backbone
- Recommended Hut Locations
- TPA Proposed Network
- CPUC Anchor Builds

04/22/22

REGION 3

- CPUC Unserved Residential & Non-Residential
- Percent Households Below Poverty Line



Unserved Residential & Unserved Non-Residential

- > 2,000 - 5,574
- > 1,500 - 2,000
- > 1,000 - 1,500
- > 500 - 1,000
- > 1 - 500



Percent Households Below Poverty Line

Census tract data from U.S. Census Bureau's American Community Survey (ACS) - 2015-2019 5-year estimates

LEGEND

- State & National Highways
- Tribal Nations
- Caltrans Districts
- Initial 18 TPA Projects
- CalREN Backbone
- Recommended Hut Locations
- TPA Proposed Network
- CPUC Anchor Builds

04/22/22

REGION 3

- Initial TPA Projects - 1/31/22
- CalREN Backbone

9-CENTRAL COAST

10-WEST FRESNO

11-INYO

12-KERN

13-SAN LUIS OBISPO/KERN

LEGEND

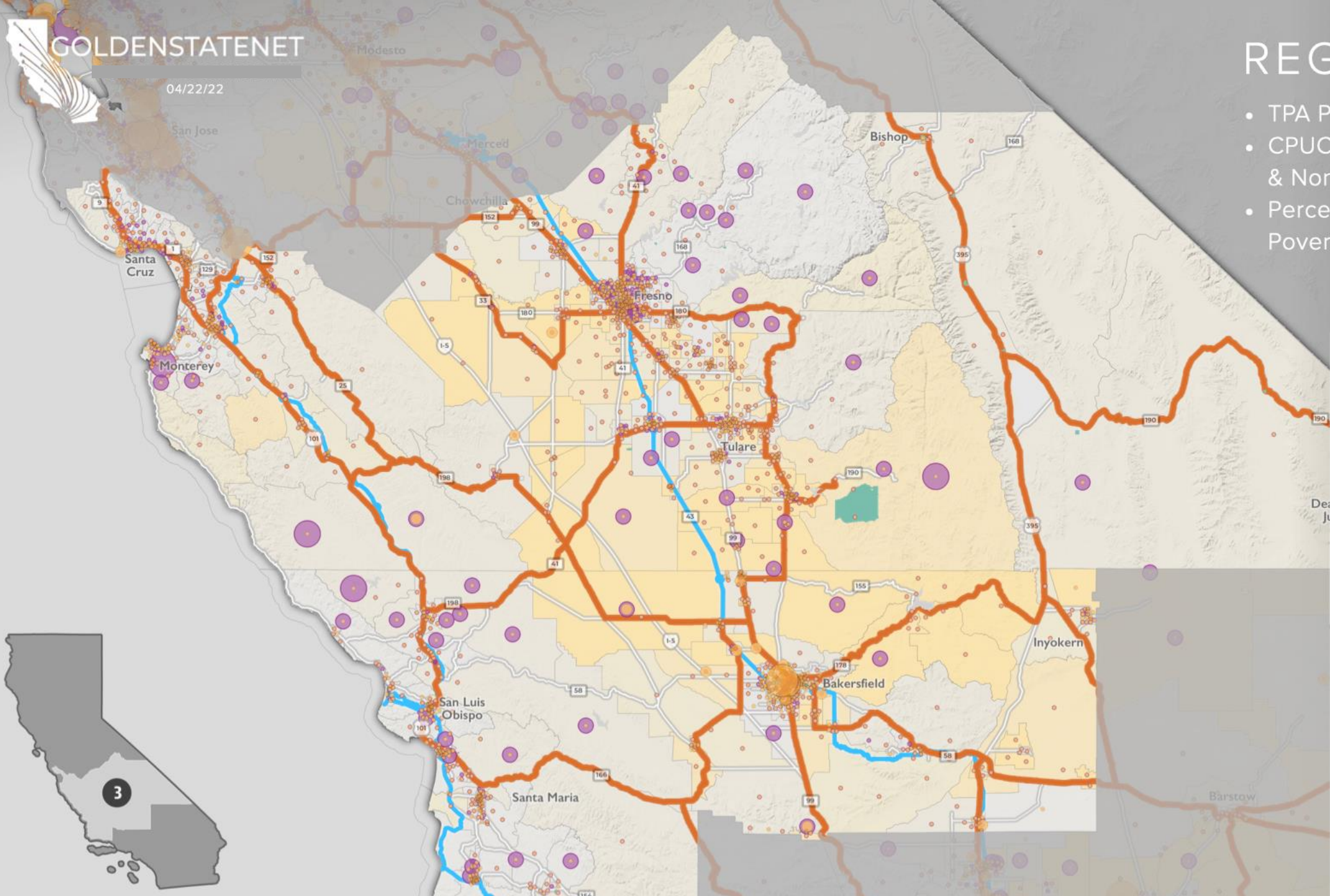
- State & National Highways
- Tribal Nations
- Caltrans Districts
- Initial 18 TPA Projects
- CalREN Backbone
- Recommended Hut Locations
- TPA Proposed Network
- CPUC Anchor Builds



04/22/22

REGION 3

- TPA Proposed Network
- CPUC Unserved Residential & Non-Residential
- Percent Households Below Poverty Line



Unserved Residential & Unserved Non-Residential

- > 2,000 - 5,574
- > 1,500 - 2,000
- > 1,000 - 1,500
- > 500 - 1,000
- > 1 - 500



Percent Households Below Poverty Line

Census tract data from U.S. Census Bureau's American Community Survey (ACS) - 2015-2019 5-year estimates

LEGEND

- State & National Highways
- Tribal Nations
- Caltrans Districts
- Initial 18 TPA Projects
- CalREN Backbone
- Recommended Hut Locations
- TPA Proposed Network
- CPUC Anchor Builds



REGION 3

- CPUC Anchor Builds
- TPA Proposed Network
- CPUC Unserved Residential & Non-Residential
- Percent Households Below Poverty Line

Unserved Residential & Unserved Non-Residential

- > 2,000 - 5,574
- > 1,500 - 2,000
- > 1,000 - 1,500
- > 500 - 1,000
- > 1 - 500



Percent Households Below Poverty Line

Census tract data from U.S. Census Bureau's American Community Survey (ACS) - 2015-2019 5-year estimates

LEGEND

- State & National Highways
- Tribal Nations
- Caltrans Districts
- Initial 18 TPA Projects
- CalREN Backbone
- Recommended Hut Locations
- TPA Proposed Network
- CPUC Anchor Builds



REGION 4: KEY HIGHLIGHTS

Geographic/Environmental:

- Portions of region are densely populated urban areas.
- Further analysis required for Catalina Island.

Population:

- Service affordability will be key due to socioeconomic factors in parts of the region.

Technical/Business-related:

- Significant joint build opportunities.
- Multiple telecom carriers and considerable existing fiber in some areas create opportunities for IRU alternatives.
- Northeast area of the region lacks Caltrans ROW and may require further evaluation.

6-FRESNO

5-SAN LUIS
OBISPO

REGION 4

- State & National Highways
- Tribal Nations
- Caltrans Districts









7-LOS ANGELES

8-SAN BERNARDINO

12-IRVINE

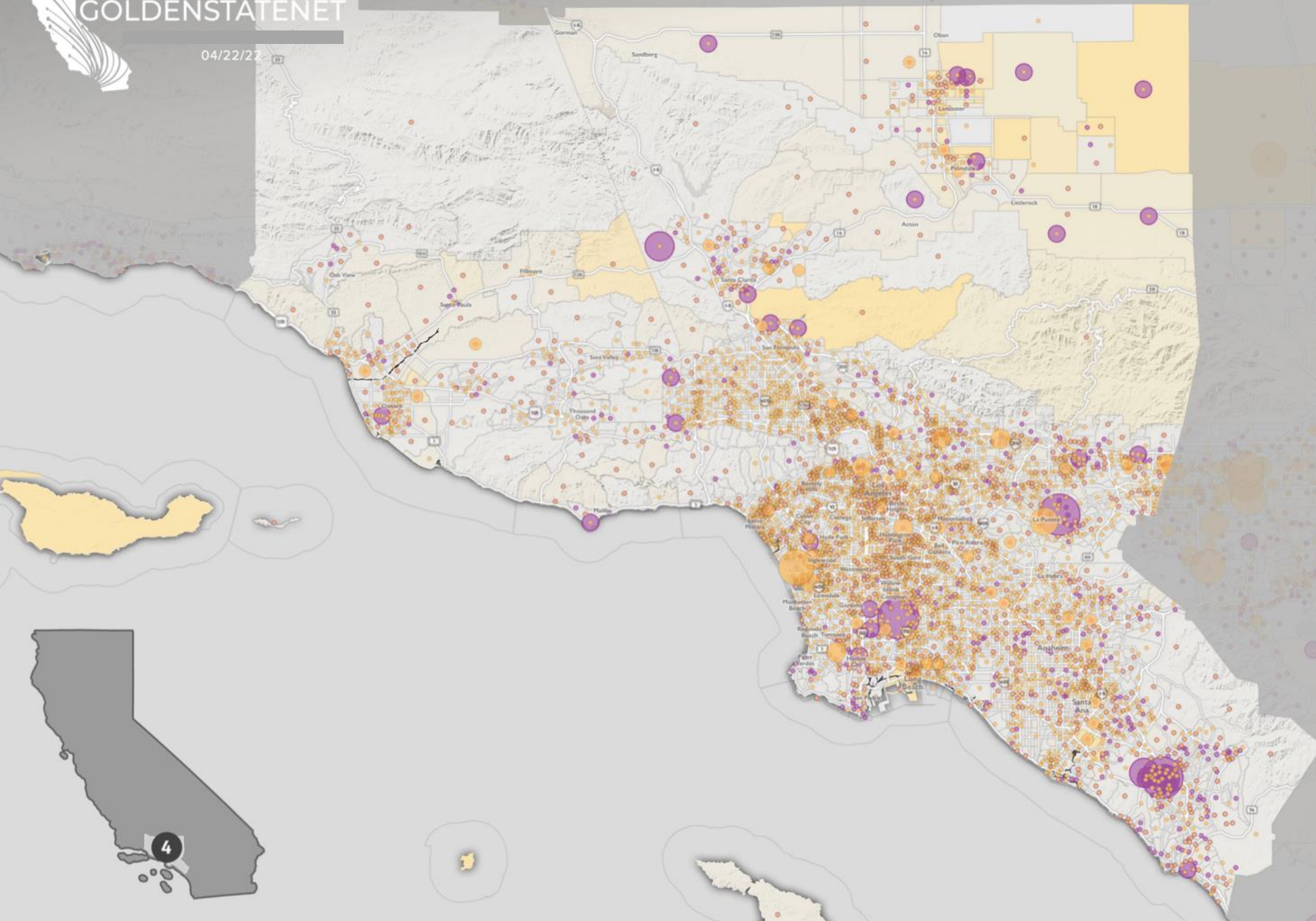
11-SAN DIEGO

LEGEND

-  State & National Highways
-  Tribal Nations
-  Caltrans Districts
-  Initial 18 TPA Projects
-  CalREN Backbone
-  Recommended Hut Locations
-  TPA Proposed Network
-  CPUC Anchor Builds

REGION 4

- CPUC Unserved Residential & Non-Residential
- Percent Households Below Poverty Line



Unserved Residential & Unserved Non-Residential

- > 2,000 - 5,574
- > 1,500 - 2,000
- > 1,000 - 1,500
- > 500 - 1,000
- > 1 - 500



Percent Households Below Poverty Line

Census tract data from U.S. Census Bureau's American Community Survey (ACS) - 2015-2019 5-year estimates

LEGEND

- State & National Highways
- Tribal Nations
- Caltrans Districts
- Initial 18 TPA Projects
- CalREN Backbone
- Recommended Hut Locations
- TPA Proposed Network
- CPUC Anchor Builds

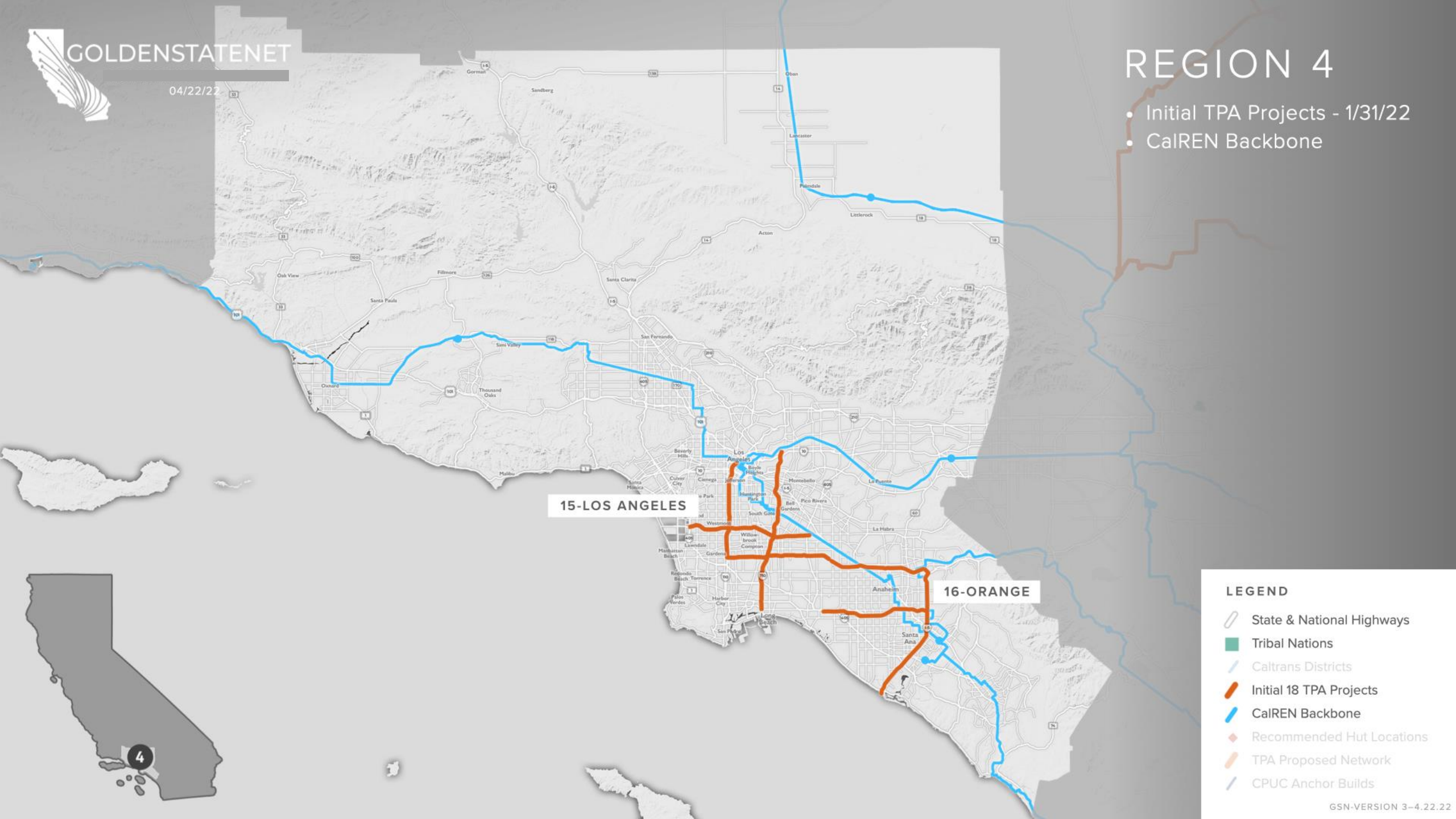




04/22/22

REGION 4

- Initial TPA Projects - 1/31/22
- CalREN Backbone



15-LOS ANGELES

16-ORANGE

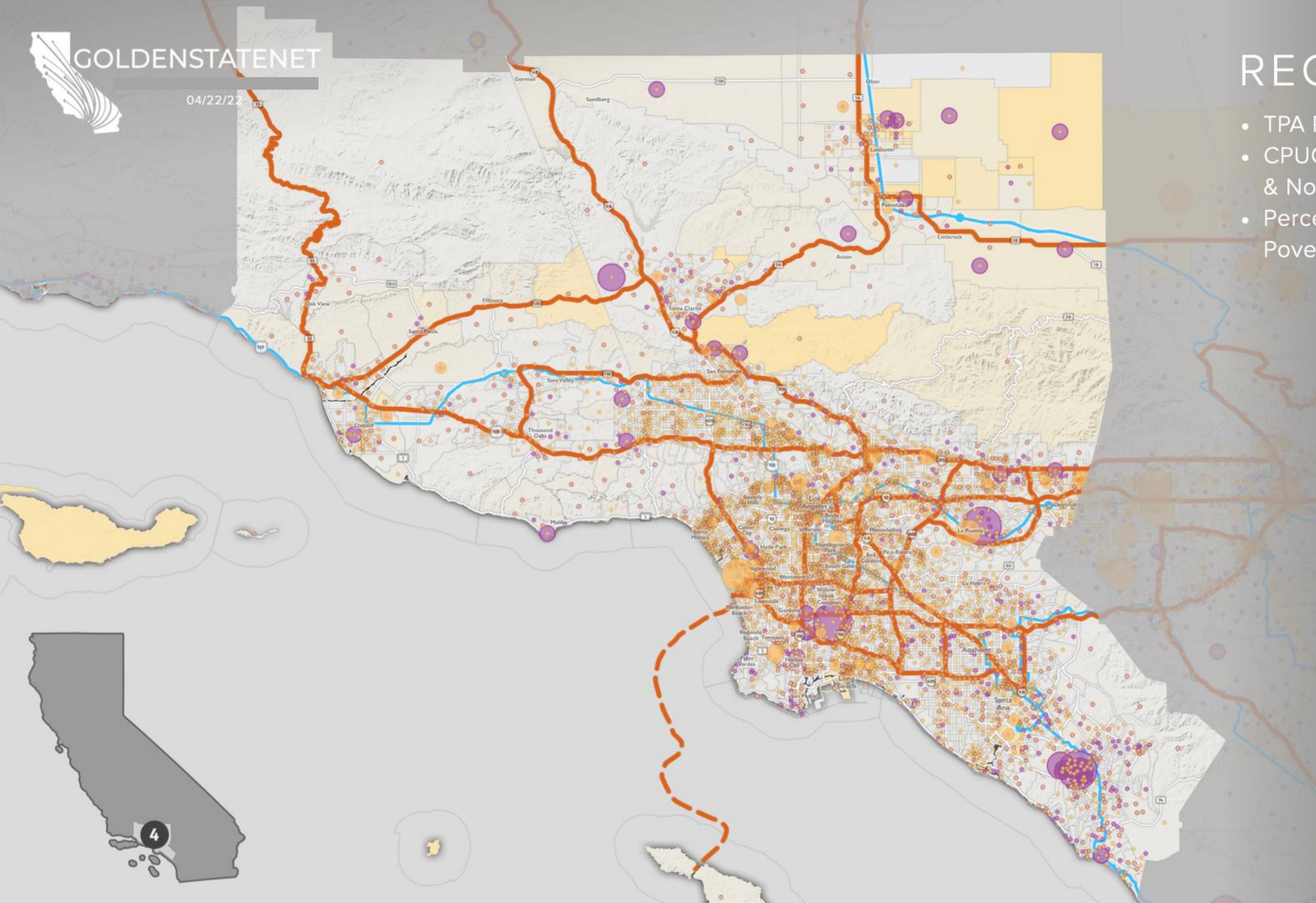
LEGEND

- State & National Highways
- Tribal Nations
- Caltrans Districts
- Initial 18 TPA Projects
- CalREN Backbone
- Recommended Hut Locations
- TPA Proposed Network
- CPUC Anchor Builds



REGION 4

- TPA Proposed Network
- CPUC Unserved Residential & Non-Residential
- Percent Households Below Poverty Line



Unserved Residential & Unserved Non-Residential

- ● > 2,000 - 5,574
- ● > 1,500 - 2,000
- ● > 1,000 - 1,500
- ● > 500 - 1,000
- ● > 1 - 500

100-25 25-20 20-15 15-5 5-0

Percent Households Below Poverty Line

Census tract data from U.S. Census Bureau's American Community Survey (ACS) - 2015-2019 5-year estimates

LEGEND

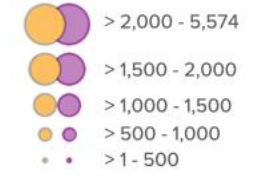
- State & National Highways
- Tribal Nations
- Caltrans Districts
- Initial 18 TPA Projects
- CalREN Backbone
- Recommended Hut Locations
- TPA Proposed Network
- CPUC Anchor Builds



REGION 4

- CPUC Anchor Builds
- TPA Proposed Network
- CPUC Unserved Residential & Non-Residential
- Percent Households Below Poverty Line

Unserved Residential & Unserved Non-Residential



Percent Households Below Poverty Line

Census tract data from U.S. Census Bureau's American Community Survey (ACS) - 2015-2019 5-year estimates

LEGEND

- State & National Highways
- Tribal Nations
- Caltrans Districts
- Initial 18 TPA Projects
- CalREN Backbone
- Recommended Hut Locations
- TPA Proposed Network
- CPUC Anchor Builds



REGION 5: KEY HIGHLIGHTS

Geographic/Environmental:

- Includes densely populated urban areas as well as desert regions prone to extreme heat.

Population:

- Significant number of Tribal Nations in the region will be positively impacted by suggested routes.
- Service affordability will be key due to socioeconomic factors in parts of the region.

Technical/Business-related:

- Significant opportunities to connect to other major Internet hubs in the West.
- Multiple telecom carriers and considerable existing fiber in some areas create opportunities for IRU alternatives.



9-BISHOP

6-FRESNO

7-LOS ANGELES

12-IRVINE

8-SAN BERNARDINO

11-SAN DIEGO

REGION 5

- State & National Highways
- Tribal Nations
- Caltrans Districts

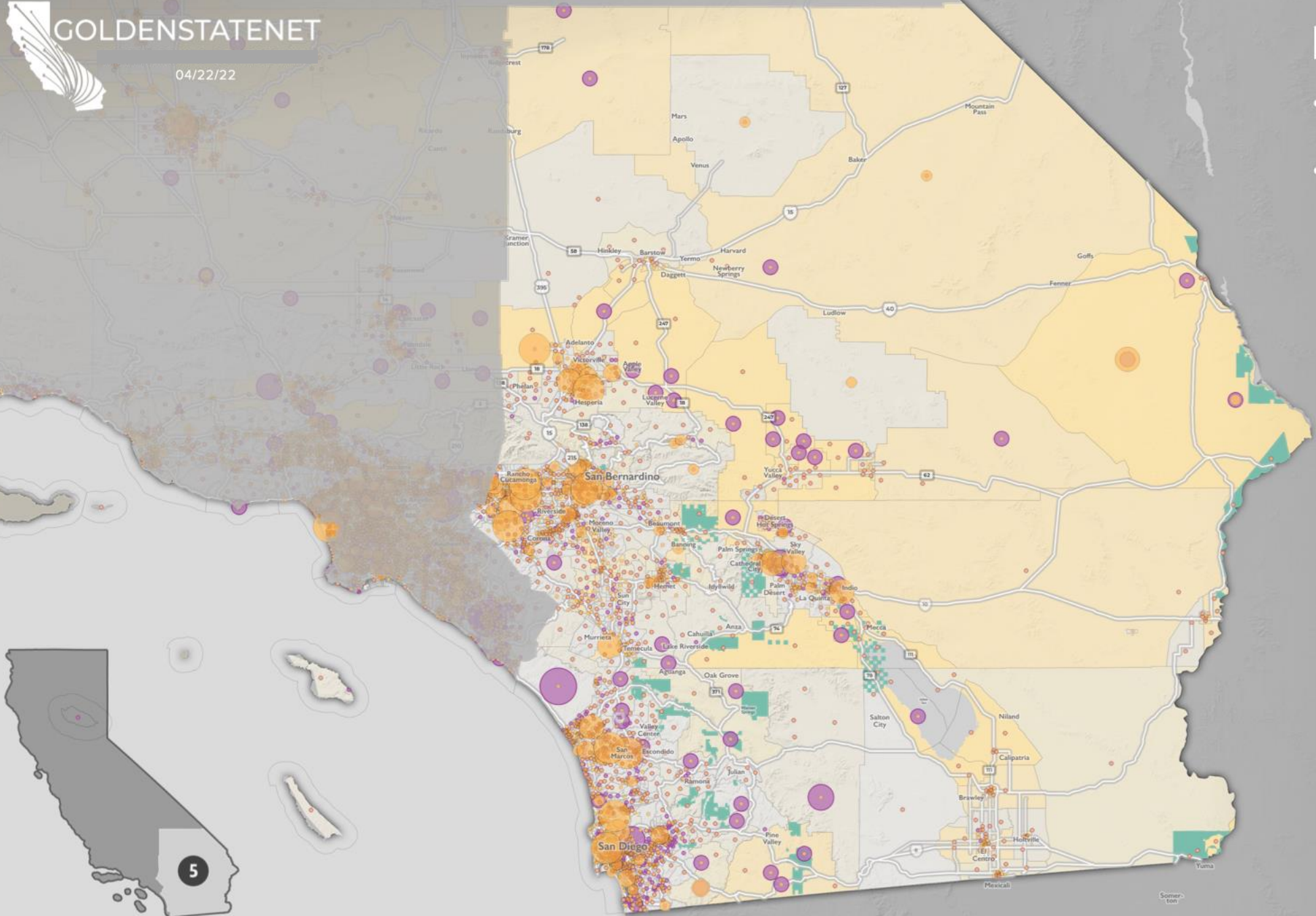


LEGEND

- State & National Highways
- Tribal Nations
- Caltrans Districts
- Initial 18 TPA Projects
- CalREN Backbone
- Recommended Hut Locations
- TPA Proposed Network
- CPUC Anchor Builds

REGION 5

- CPUC Unserved Residential & Non-Residential
- Percent Households Below Poverty Line



Unserved Residential & Unserved Non-Residential



Percent Households Below Poverty Line

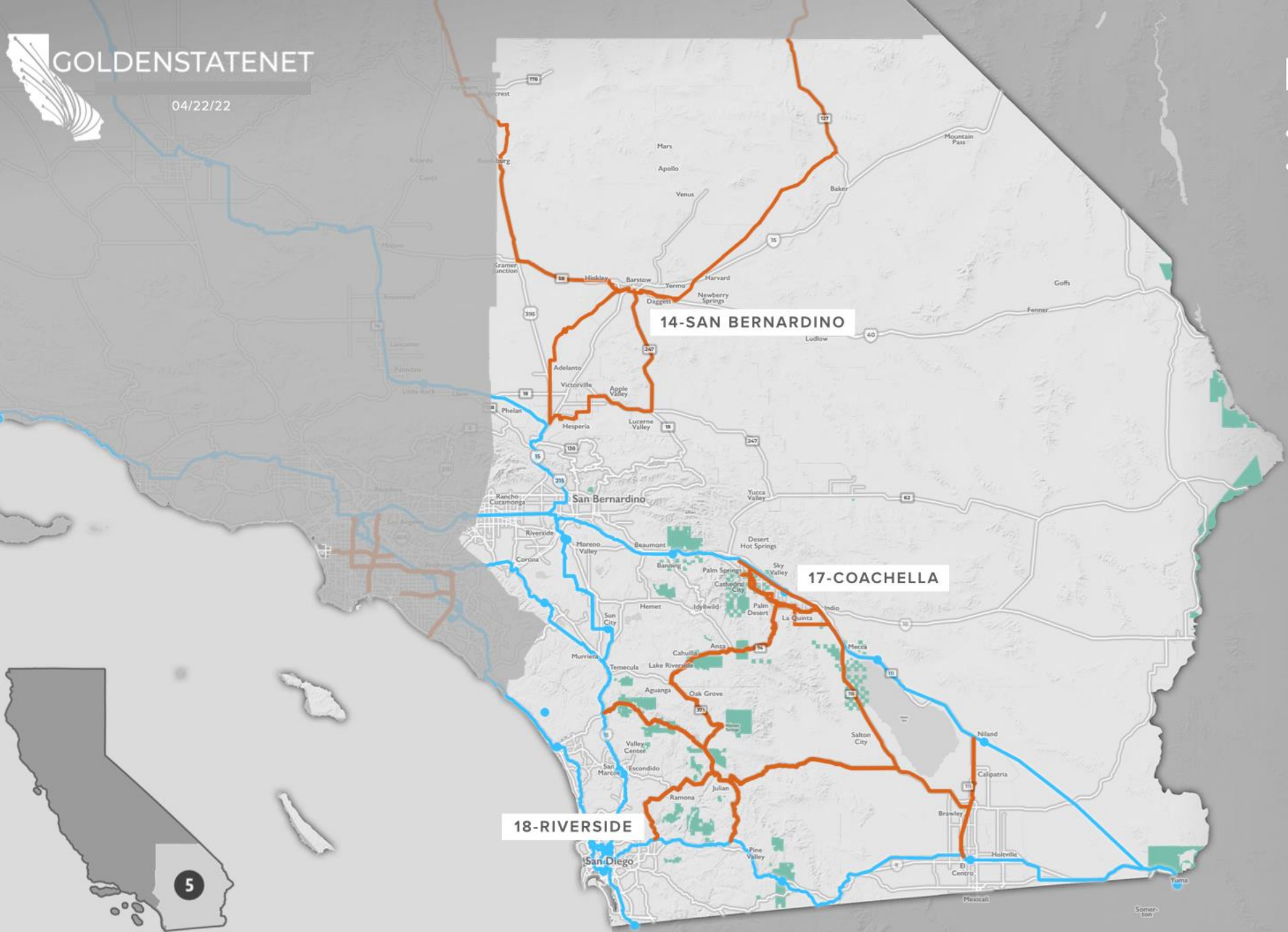
Census tract data from U.S. Census Bureau's American Community Survey (ACS) - 2015-2019 5-year estimates

LEGEND

- State & National Highways
- Tribal Nations
- Caltrans Districts
- Initial 18 TPA Projects
- CalREN Backbone
- Recommended Hut Locations
- TPA Proposed Network
- CPUC Anchor Builds

REGION 5

- Initial TPA Projects - 1/31/22
- CalREN Backbone



14-SAN BERNARDINO

17-COACHELLA

18-RIVERSIDE

LEGEND

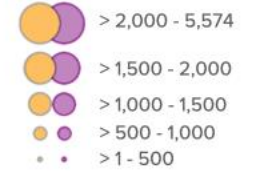
- State & National Highways
- Tribal Nations
- Caltrans Districts
- Initial 18 TPA Projects
- CalREN Backbone
- Recommended Hut Locations
- TPA Proposed Network
- CPUC Anchor Builds

REGION 5

- TPA Proposed Network
- CPUC Unserved Residential & Non-Residential
- Percent Households Below Poverty Line



Unserved Residential & Unserved Non-Residential



Percent Households Below Poverty Line

Census tract data from U.S. Census Bureau's American Community Survey (ACS) - 2015-2019 5-year estimates

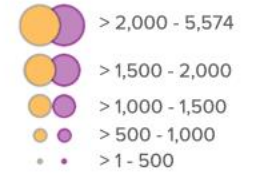
LEGEND

- State & National Highways
- Tribal Nations
- Caltrans Districts
- Initial 18 TPA Projects
- CalREN Backbone
- Recommended Hut Locations
- TPA Proposed Network
- CPUC Anchor Builds

REGION 5

- CPUC Anchor Builds
- TPA Proposed Network
- CPUC Unserved Residential & Non-Residential
- Percent Households Below Poverty Line

Unserved Residential & Unserved Non-Residential



Percent Households Below Poverty Line

Census tract data from U.S. Census Bureau's American Community Survey (ACS) - 2015-2019 5-year estimates

LEGEND

- State & National Highways
- Tribal Nations
- Caltrans Districts
- Initial 18 TPA Projects
- CalREN Backbone
- Recommended Hut Locations
- TPA Proposed Network
- CPUC Anchor Builds



OVERVIEW MAP

- TPA Proposed Network



Mark Monroe

Deputy Director, Middle-Mile Broadband Initiative

California Department of Technology

Important Next Step

- CDT plans to complete its review and analysis of this map.
- CDT will provide a final initial “build” map to Caltrans to begin its systemwide preconstruction work.

Benefits:

- Caltrans can start the clock on the 18-24 months of preconstruction work needed before construction can begin.
- Caltrans can develop and refine its cost estimates to inform build and lease decisions.

Going forward:

- GSN will continue developing a map of existing infrastructure that can be leased using IRUs.
- CDT will determine how much the state can afford to build and how much will need to be leased.

Amy Tong

Secretary of Government Operations

California Government Operations Agency

Robert Osborn

Director, Communications Division
California Public Utilities Commission

2021 Broadband Package

Background on CPUC Responsibilities



Last Mile Initiatives and Supporting Programs

1. Broadband Technical Assistance - \$50 million total**

- Purpose: Help prepare local governments & Tribes for broadband infrastructure investments.

2. Loan Loss Reserve - \$750 million

- Purpose: enable local governments & nonprofits to secure financing for broadband infrastructure.

3. Federal Funding Account - \$ 2 billion

- Purpose: Funding for last-mile broadband infrastructure projects.

4. California Advanced Services Fund (CASF) ~up to \$150 million per year

- Purpose: assist with broadband infrastructure deployment & adoption in public housing, Tribes, & unserved areas.

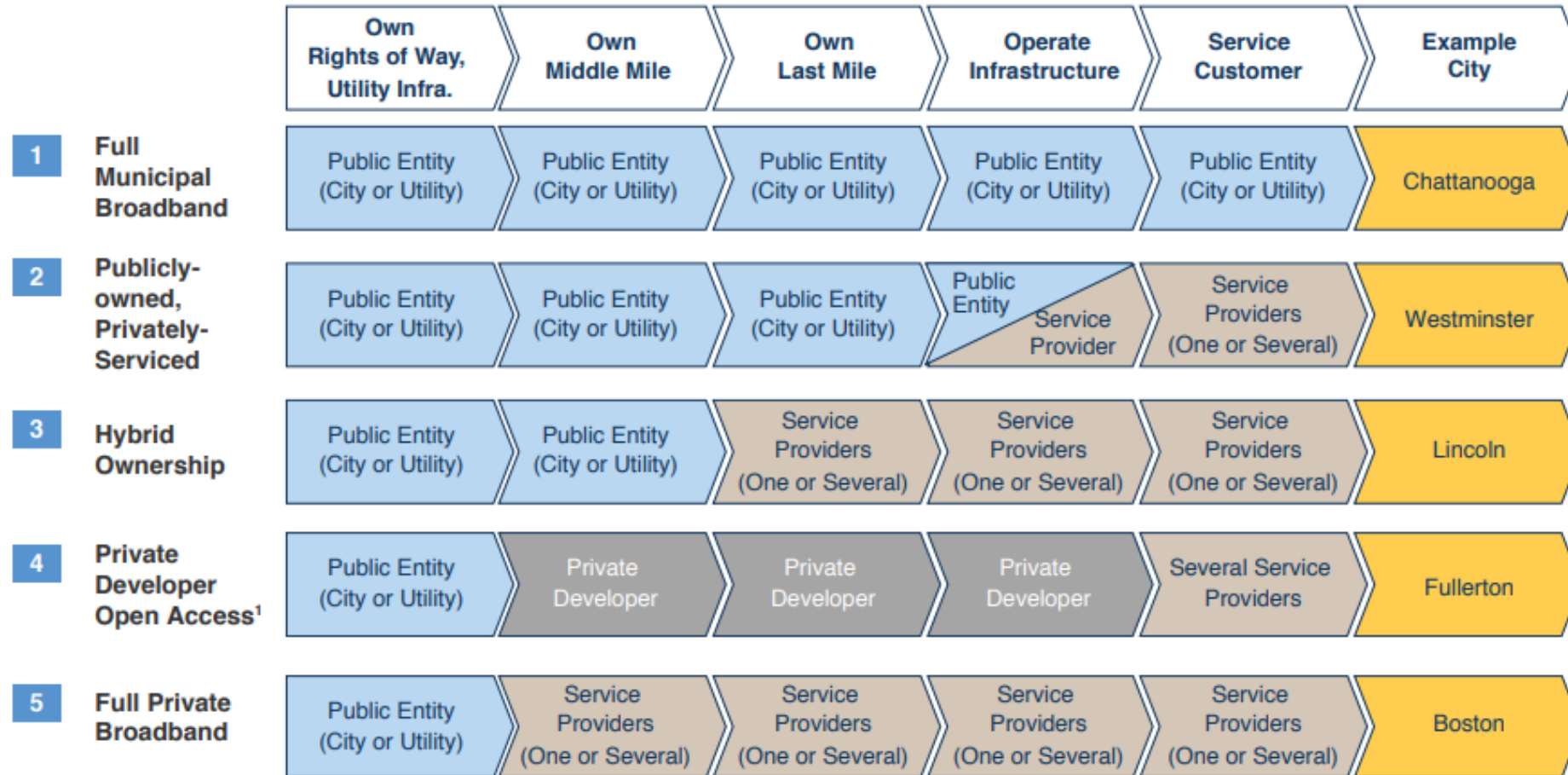
Middle-Mile Locations

- Identify routes & priority areas using public process.
- Report mapping & analysis to the California Department of Technology for use in program implementation & project development.

* May be increased pursuant to Public Utilities Code Section 281 (d)(4)

** Included in \$2 billion Last-Mile Initiative

Public-Private Broadband Models



Note: 1) Private Developer is defined as private company that builds, owns and operates the network infrastructure and offers open access to it to several retail SPs that provide service on the top

Tribal Technical Assistance

- First application window opened October 1, 2020.
- During 2021, the CPUC awarded 21 grants to 11 Tribes totaling approximately \$1,340,550 for:
 - Feasibility studies, market studies, and business plans.
- By the end of December 2021, 30 grants were awarded to 16 tribes for a total funding allocation of approximately \$1,878,550.
 - Projects must be completed within 24 months

Tribal Technical Assistance Grants

What do they fund?

- Grants to assist California Tribes in developing market studies, feasibility studies, and/or business plans, which support Tribes in their pursuit of improved communications were specified in the Commission Decision.

How much are the grants?

- Grants shall not exceed **\$150,000** per Tribe, per fiscal year.
- The aggregate amount available for awards (to all Tribes) shall not exceed \$5,000,000 or until funds are replenished and/or exhausted.

Who is eligible?

- California Tribes **with or without** federal recognition that demonstrate Tribal leadership support are eligible for technical assistance grants.

Tribal Technical Assistance – more information

Questions to: Tribal_Tech_Assist@cpuc.ca.gov

More information on the CPUC's website:

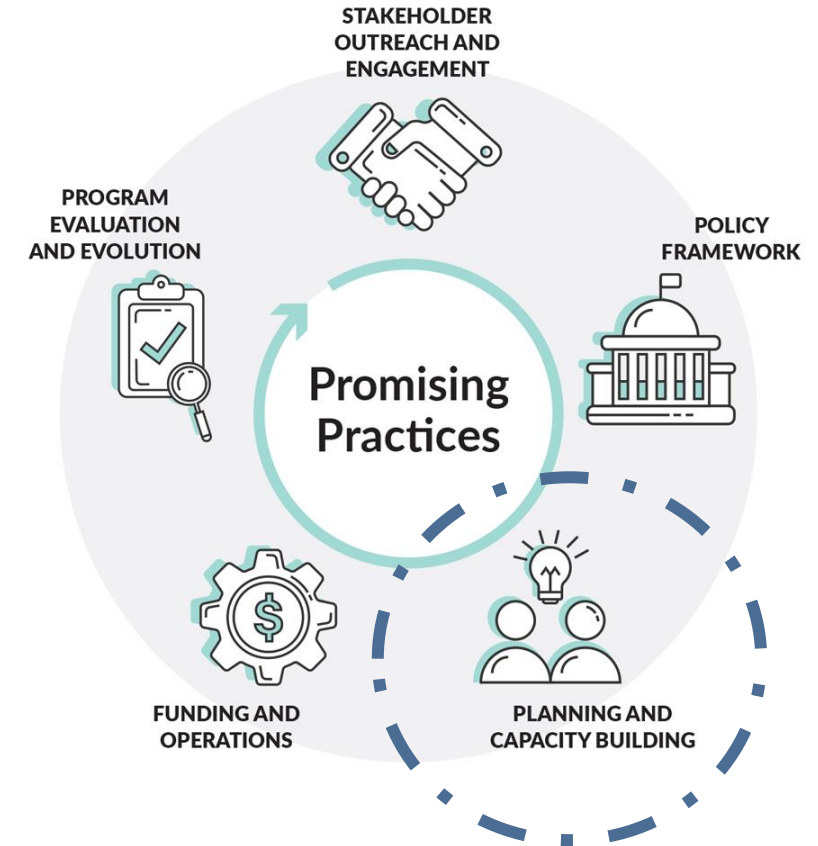
- <https://www.cpuc.ca.gov/industries-and-topics/internet-and-phone/california-advanced-services-fund/tribal-technical-assistance>

Rulemaking – Decision 20-08-005

- <https://docs.cpuc.ca.gov/PublishedDocs/Published/G000/M344/K855/344855585.PDF>

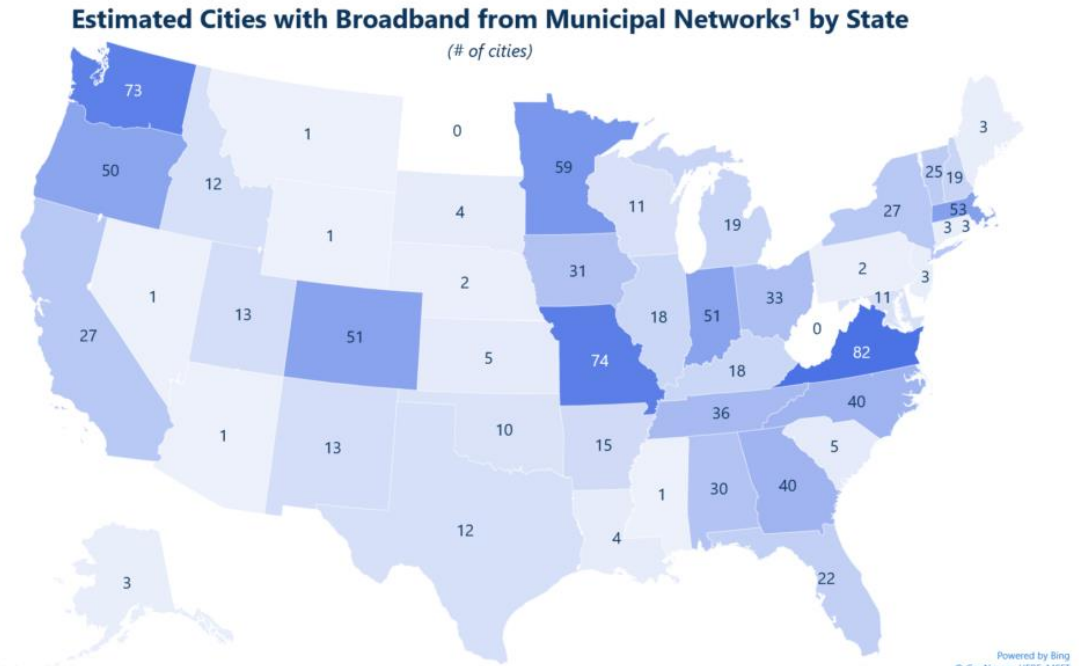
Local Agency Technical Assistance

- **\$50 million** for **technical assistance grants** to local agencies and Tribes.
- Funding can be used for public entity or consultant costs to create **Joint Powers Authorities**, and for other costs to prepare to deploy broadband infrastructure, including for **environmental** permitting, **engineering**, and **design** activities.
- **Timing** - Applications June-July 2022.
- **Amount** - Grants to qualifying local agencies and tribal governments in amounts not to exceed **\$500,000** per local agency or tribal government, per fiscal year.
- [More information](#)



Loan Loss Reserve Fund

- **\$750 million** Loan Loss Reserve Fund to support development of public broadband networks.
 - A form of **credit enhancement**, or a type of insurance, that helps lenders control for the risk that loans will not be repaid. This new funding will provide collateral to local governments and non-profits for bond financing.
 - [The US Department of Energy operates a similar loan loss reserve program.](#)
- CPUC [Rulemaking 20-08-021](#)
- **Timing** - Proposal for input by August 2022, comments and workshops to follow.
- **Actions** - Engage in the implementation and consider becoming a party to the proceeding to inform program rules that meet needs.

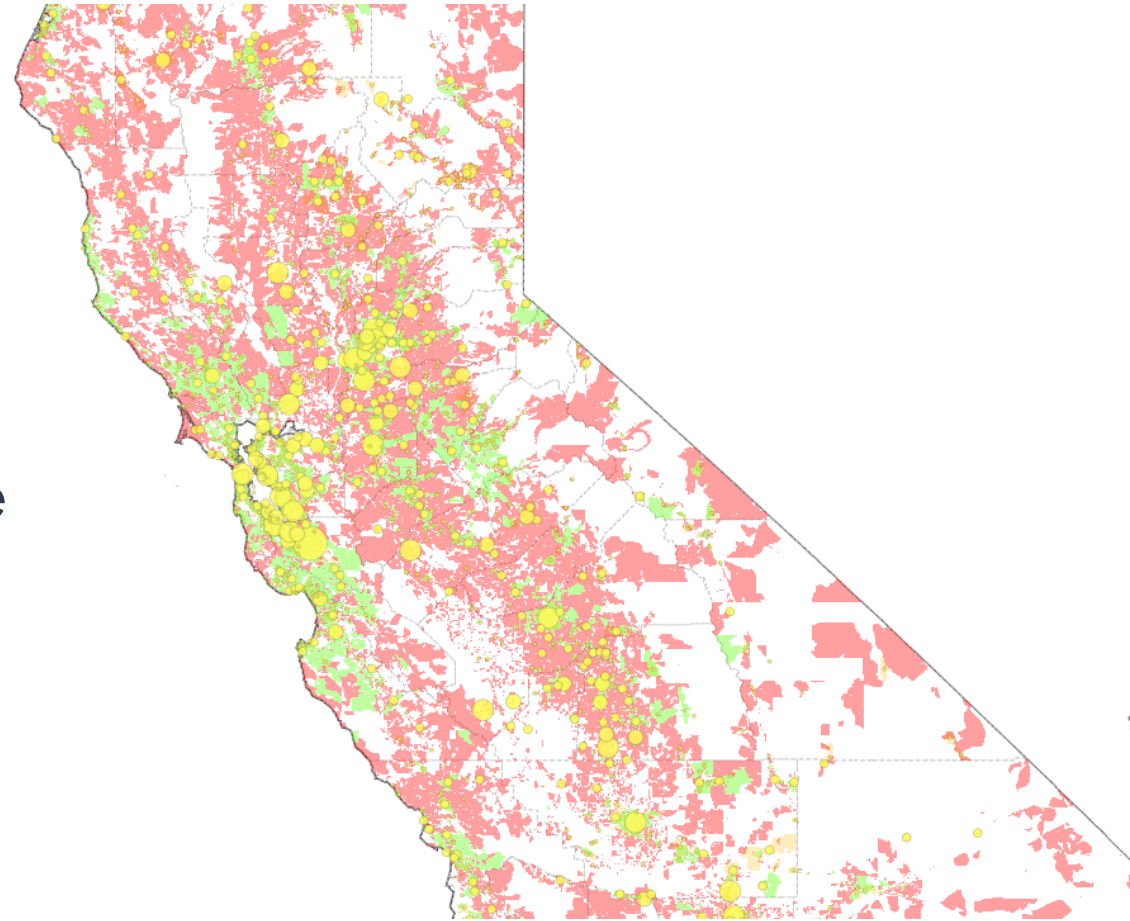


Sources: Form 477, US Census Data, Muninetworks.org Expert Interviews, AV&Co. Research & Analysis

Source: [Altman Solon](#)

Last Mile Federal Funding Account

- The new \$2 billion [Federal Funding Account](#) is for last-mile broadband infrastructure grants.
- These funds must be encumbered by the **2025** federal deadline, and spent (i.e., projects built) before **2027**.
- **Timing** - Targeting applications before July 2022.
- **Action** - Get ready to apply or to support those who will apply.

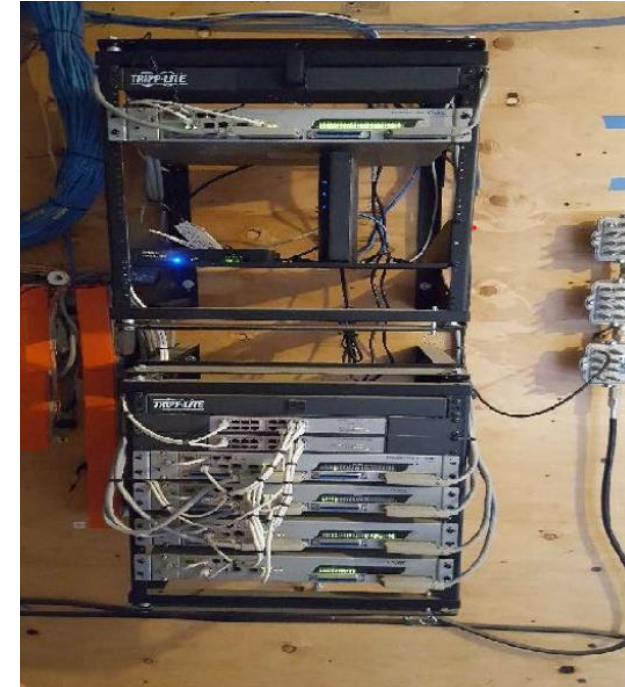


Adoption, Consortia, & Infrastructure Broadband Grants

- Broadband Adoption, Consortia, and Infrastructure grants are supported by the [California Advanced Services Fund \(CASF\)](#) broadband grant program. Up to **\$150 million** a year funded by a surcharge on telephone bills
 - Broadband Adoption Grants
 - Broadband Consortia Grants
 - Broadband Infrastructure Grants
- **Timing** - updated rules for Adoption, Consortia, and Housing as soon as May 19; applications in June/July. Proposal on Infrastructure expected before end of second quarter 2022.
- **Action**
 - Engage on the implementation of the Broadband **Adoption, Consortia, and Public Housing** Program Updates in Rulemaking 20-08-021.
 - [Become a party](#) to the Rulemaking.
 - Join the mailing list for funding availability (email CASF_Adoption@cpuc.ca.gov)
 - Watch for the CASF budget allocation of amounts across the subaccounts (Adoption, Consortia, Infrastructure, and Public Housing)

Broadband Public Housing Account

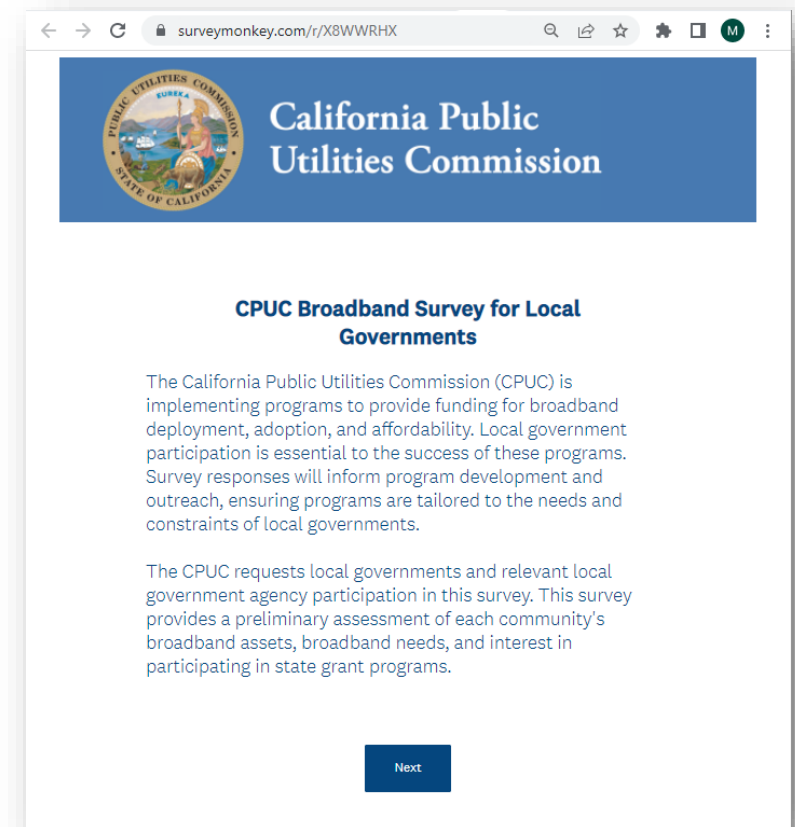
- The revamped [Broadband Public Housing Account Grants](#) will provide grants to connect qualifying low-income housing, such as publicly supported housing communities, with infrastructure to provide free internet service.
- **Timing** - Targeting applications in June/July 2022.
- **Action** - Public entities and non-profit orgs: assess broadband needs of publicly support housing communities. Prepare applications or support entities that will apply. Stay tuned for staff proposal expanding eligibility.



*CASF Public Housing Account project
Housing Authority of the County of Kern –
Green Gardens Main Distribution Frame
room*

CPUC Broadband Survey for Local Governments

- Please participate in the CPUC Broadband Survey for Local Governments by **May 30!**
- The survey assesses each community's broadband assets, broadband needs, and interest in state grant programs.
- Survey responses will inform program development and outreach.
- **Survey Link:**
<https://www.surveymonkey.com/r/X8WWRHX>



Thank You

contact: statewidebroadband@cpuc.ca.gov



Deployment of Anza Electric's CASF Connect Anza project, Riverside County



California Public
Utilities Commission

Sunne McPeak

President & CEO

California Emerging Technology Fund

Susan E. Walters

Senior Vice President

California Emerging Technology Fund

- Overview
- California Broadband Council Plan of Action
- Tracking Enrollment by County and Zip Code
- Action Plan

Affordable Connectivity Program Overview

- Benefit: \$30 per month or \$75 per month if the HH is on Tribal Land
- Eligibility for a member of the Household: Lifeline, Medi-Cal, CalFresh, CEP/NSLP, Veterans Benefits, WIC, Tribal TANF, Pell Grant or income based for head of household at 200% FPL
- Application: Everyone except Lifeline participants

California Broadband Council Plan of Action

Goal: 5 Million Households Enrolled

- 90% by 2025 4,500,000
- 95% by 2027 4,750,000

Plan of Action

- Review Goals During Roundtables on the Broadband Plan
- Engage and Mobilize ISPs to Promote ACP in Ads (Raise Awareness)
- Enlist Qualifying State Agencies to Promote to Participants (Credible Source)
- Distribute ACP Info to Local and Tribal Governments (Credible Source)
- Partner with CBOs (Trusted Messengers)
- Provide Information with Legislators to Share with Constituents

Performance for Affordable Connectivity Program (ACP)

Key Observations

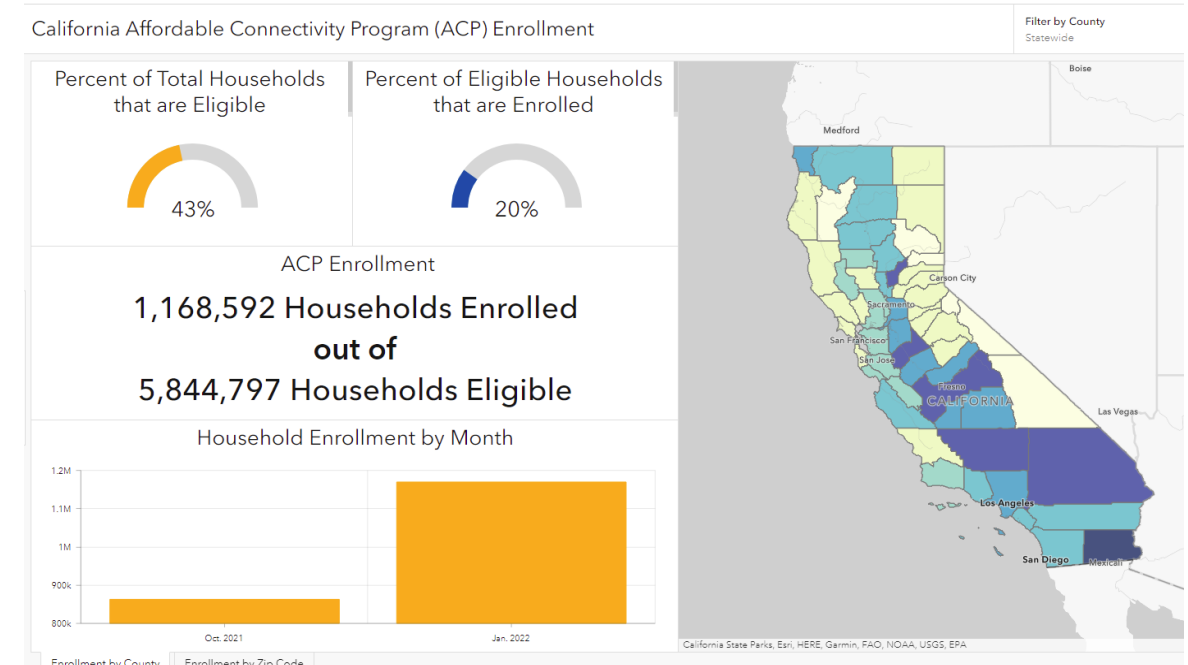
- 1.4M HHs enrolled as of May 16
- 30% for Home Internet (estimate)
- More are eligible but paying market rate

Enrollment as of May 16, 2022

Numbers for Tribal Lands are National Only

- US Tribal Lands 164,350
- US - 11,840,769
- CA - 1,480,996
 - 12% of U.S. Sign Ups
 - 28% of CA 5M Goal Set by CBC

California Enrollment Map from CSU Chico and CETF



Build Awareness Campaigns with a Call to Action

Themes

- Connect Last-Mile Projects to Middle-Mile Plans
- Plan for Adoption
- Use Paid and Earned Media, Social Media, County Depts, Printed Collateral
- Engage Partners – CBOs and Local Government Partners
- Utilize Multiple Languages In All Media
- Deliver Virtual Training for Department Staff
- Support A Call Center

Action Plan

- Collaborate Regionally to Increase Awareness With a Concerted Plan (by all means, including ISP supported advertising)
- Advertise as Creditable Source (state/tribal/county agencies)
- Engage Community with Trusted Messengers

Scott Adams

Deputy Director, Broadband & Digital Literacy
California Department of Technology

Karen Eckersley

Communications Division
California Public Utilities Commission

Federal Funding Program Update

The U.S. Department of the Treasury's **Capital Projects Fund** provides Tribal governments with funding for capital projects, including broadband.

The **Infrastructure Investment and Jobs Act (IIJA)** designates \$65 billion to close the digital divide and invest in broadband.

Notice of Funding Opportunities released on May 13:

- **Broadband Equity, Access, and Deployment Program** to support broadband infrastructure and deployment.
- **State Digital Equity Planning and Capacity Grants** for states to promote the achievement of digital equity and inclusion. Includes additional provision for Tribal Digital Equity Plans.
- **Enabling Middle Mile Broadband Infrastructure Program** for the construction, improvement or acquisition of middle mile infrastructure

California's BEAD and State Digital Equity Planning begins this summer. More to come soon!



Nicolette Gerald

Policy Advisor, Capital Projects Fund

Office of Recovery Programs, U.S. Department of Treasury

U.S. DEPARTMENT OF THE TREASURY

AN INTRODUCTION TO THE

Coronavirus Capital Projects Fund



About This Briefing

The U.S. Department of the Treasury is providing this webinar and other resources for informational purposes.

The descriptions provided in this document are non-exhaustive, do not describe all terms and conditions associated with the use of Coronavirus Capital Projects Fund (Capital Projects Fund), and do not describe all of the eligible and ineligible uses that may apply to this funding.

Any Capital Projects Fund funding received will be subject to the terms and conditions of the agreement entered into by Treasury and the respective recipients, as is outlined by the guidance.

Capital Projects Fund Overview

The Capital Projects Fund provides Tribal governments with access to funding to invest in capital projects to aid their response to the COVID-19 public health emergency. Making funding available for broadband infrastructure is a priority of the fund.

Approximately \$167,504 has been allocated to each Tribal government.

The Capital Projects Fund aims to:

- Directly **support recovery from the COVID-19 public health emergency** by strengthening and improving infrastructure necessary for participation in work, education, and health monitoring that will last beyond the pandemic.
- Enable investments in capital assets designed to **address inequities in access to critical services**.
- Contribute to the Administration's goal to **provide every American with the modern infrastructure** necessary to access critical services, including a high-quality and affordable broadband internet connection.

Use of Funds

Tribal governments have flexibility in selecting how they would like to deploy CPF funding to address critical needs identified within their communities.

Presumptively Eligible Uses

- ✓ **Broadband Infrastructure Projects**
 - Encouraged to serve **locations without access to reliable wireline speeds of 100 Mbps download / 20 Mbps upload**
 - Designed to **deliver reliable service with minimum 100 Mbps download / 100 Mbps upload** unless impracticable
- ✓ **Digital Connectivity Technology Projects**
 - Purchase or installation of devices, such as **tablets, desktop computers, and laptops made available to the public** through loan programs or use in public facilities
 - Purchase or installation of **wi-fi equipment for public use**
- ✓ **Multi-Purpose Community Facility Projects**
 - Construction or improvement of **buildings designed to jointly and directly enable work, education, and health monitoring**

Case-by-Case Reviews

Recipients may propose other uses and must demonstrate that the project:

- Invests in a capital asset that directly and jointly enables work, education, and health monitoring
- Addresses impacts of COVID-19
- Addresses a critical need in the community

Presumptively Ineligible Uses

- General infrastructure projects like highways, bridges, transit systems, and ports
- General construction and improvement of hospitals or traditional schools

How to Apply

Tribal governments must complete a simple application to receive funding, including:

- Basic information to confirm eligibility (and must be signed by an authorized representative)
- Funds transfer information, including recipient's financial institution, address, phone, routing number, and account number (requires a valid SAM.gov account)
- A signed award agreement, and
- Information about the Tribal government's intended use of funds.

Important Reminders

- **Submission Deadline:** June 1, 2022
 - Treasury may-reallocate unclaimed funds after June 1, 2022; Tribal governments are therefore encouraged to submit Applications well in advance of the deadline to allow remediation if needed
- Tribal governments must submit a request to receive funding even if they have previously requested funds from other programs through this portal.
- Tribal governments may apply jointly including via a Tribal consortium.
- **Resources**
 - **Treasury has partnered with NTIA's Tribal Connectivity & Nation to Nation Coordination** to provide applicants with support.
 - **Webinar recording** for Tribal applicants
 - An **application checklist** for Tribal governments

Example Tribal Projects Receiving Awards

✓ Broadband Infrastructure Projects

This project will contribute to the **deployment of broadband infrastructure facilities and services** to the off-grid area of the Eqiiaapaayp Indian Reservation.

Ewiiaapaayp Band of Kumeyaay Indians, California

This project will fund **permitting and environmental planning fees** required to support a larger fiber-to-home broadband infrastructure project **in combination with other funds**.

Southern Ute Indian Tribe of the Southern Ute Reservation, Colorado

✓ Digital Connectivity Technology Projects

This project will **purchase laptops and tablets** for households to use on-site or check out for home use.

Delaware Nation, Oklahoma

This project will **purchase equipment to extend the public Wi-Fi access**; This project will allow Tribal Members to connect to the Wi-Fi from anywhere on the property.

Nansemond Indian Nation

✓ Multi-Purpose Community Facility Projects

This project will **construct a multi-purpose building** that will be used for education, work training, and health activities.

Rampart Village

Federal Funding Program Update

Adam Geisler

Division Chief

Tribal Connectivity and Nation to Nation Coordination, OICG,
NTIA

La Jolla Band of Luiseño Indians

Evan Feinman

Deputy Associate Administrator

Broadband Equity, Access, and Deployment (BEAD), OICG, NTIA

Sarah Bleau

Acting Director

Middle Mile Program, OICG, NTIA



CALIFORNIA BROADBAND FOR ALL ROUNDTABLE TRIBAL GOVERNMENTS

ADAM GEISLER

NATIONAL TELECOMMUNICATIONS AND INFORMATION ADMINISTRATION



MAY 19 2022

NTIA will administer ~\$48B through four programs that drive high-speed Internet access, affordability, and adoption

NTIA will administer ~\$48B of funding from the Bipartisan Infrastructure Law

| BEAD | DIGITAL EQUITY | TRIBAL | MIDDLE MILE |
|---|---|--|---|
| <p>\$42.45B</p> | <p>\$2.75B</p> | <p>\$2.00B</p> | <p>\$1.00B</p> |
| <p>Broadband Equity, Access & Deployment Program</p> <p>A program to get all Americans online by funding partnerships between states or territories, communities, and stakeholders to build infrastructure where we need it to and increase adoption of high-speed Internet.</p> | <p>Digital Equity Act</p> <p>Three programs that provide funding to promote digital inclusion and advance equity for all. They aim to ensure that all communities can access and use affordable, reliable high-speed Internet to meet their needs and improve their lives.</p> | <p>Tribal Connectivity Technical Amendments</p> <p>A program to help tribal communities expand high-speed Internet access and adoption on tribal lands.</p> | <p>Enabling Middle Mile Broadband Infrastructure</p> <p>A program to expand middle mile infrastructure, to reduce the cost of connecting unserved and underserved areas.</p> |

FCC to administer \$14.2B

For Affordable Connectivity Program, which replaced the EBB program

USDA to administer \$2.0B

Via the Rural Utilities Service

Private Activity Bonds \$0.6B

Authorizes State and local governments to use private activity bonds for rural broadband

BEAD program will provide ~\$42.45B for infrastructure planning and implementation

Funding pool
\$42.45B

A program to get all Americans online by funding partnerships between states or territories, communities, and stakeholders to build infrastructure where we need it to and increase adoption of high-speed Internet.

PROGRAM HIGHLIGHTS

Entities eligible to apply for this program include:

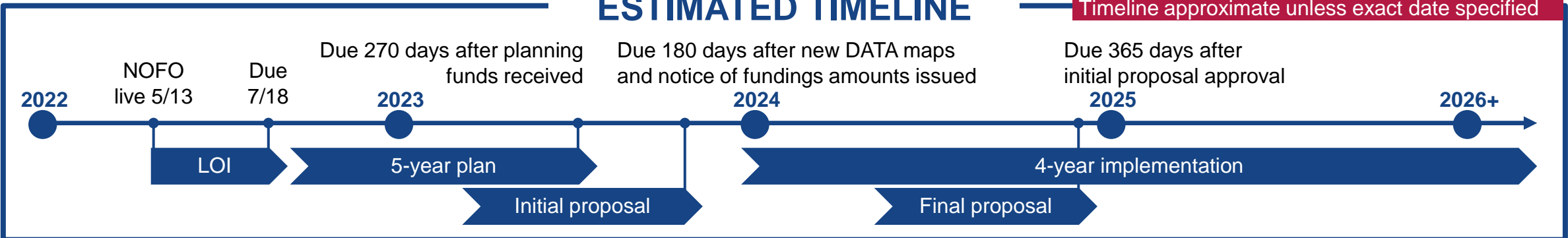
- All 50 States
- The District of Columbia and Puerto Rico
- Other Territories: U.S. Virgin Islands, Guam, American Samoa, and the Commonwealth of the Northern Mariana Islands

Example eligible uses of funds include:

- ☆ Planning for deployment of Internet
- ☆ Deploying or upgrading Internet
- ☆ Installing Internet in multi-tenant buildings
- ☆ Implementing adoption and digital equity programs
- ☆ Workforce and job training

ESTIMATED TIMELINE

Timeline approximate unless exact date specified



Digital Equity Act created three programs to promote digital equity and inclusion

Funding pool
\$2.75B

Three programs that provide funding to promote digital inclusion and advance equity for all. They aim to ensure that all communities can access and use affordable, reliable high-speed Internet to meet their needs and improve their lives.

PROGRAMS HIGHLIGHTS

The Digital Equity Act created three programs:

State Planning

- \$60M formula funding program to develop digital equity plans

State Capacity

- \$1.44B formula funding program to implement plans & promote digital inclusion

Competitive

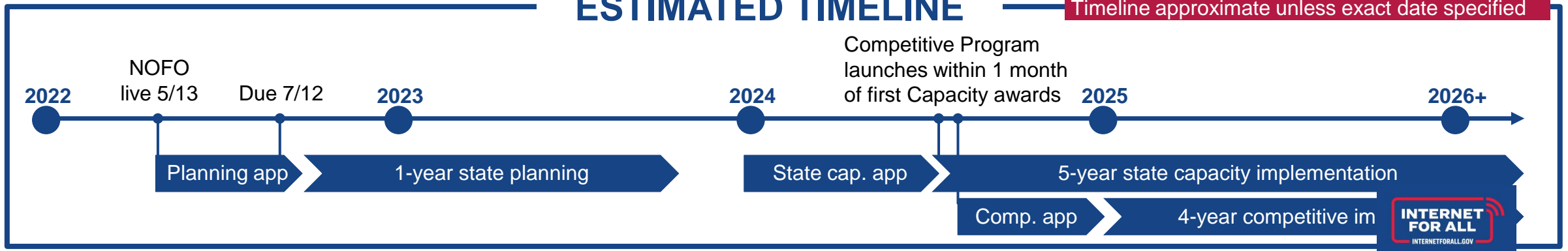
- \$1.25B to implement digital equity and inclusion activities

Example eligible uses of funds include:

- ☆ Developing digital equity plans; states must develop a plan to be eligible for state capacity grants
- ☆ Making awards to other entities to help make digital equity plans
- ☆ Improving accessibility and inclusivity of public resources
- ☆ Implementing digital equity plans and related activities
- ☆ Providing digital literacy and digital skills education
- ☆ Facilitating the adoption of high-speed Internet

ESTIMATED TIMELINE

Timeline approximate unless exact date specified



Technical amendments and new funding will strengthen current Tribal Broadband Connectivity Program

Funding pool
\$2.00B

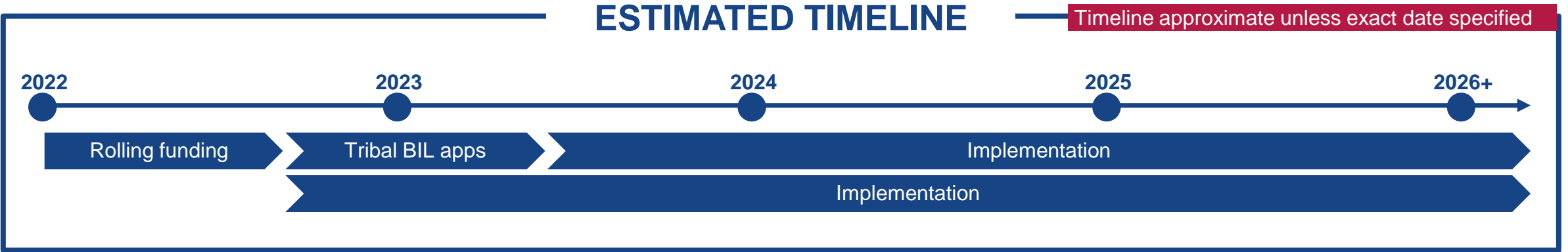
A program to help tribal communities expand high-speed Internet access and adoption on tribal lands.

PROGRAM HIGHLIGHTS

New funding will be used for additional new grants and to fully fund grants from first round of awards

Amendments to original program:

- Relaxes time requirements of original program
- Allows infrastructure grantees to spend up to 2.5% of the total project cost for related planning, feasibility and sustainability studies
- Preserves unused allocated funds for other Tribal broadband projects instead of reverting to the Treasury



Middle Mile Grant Program will invest in the construction, improvement or acquisition of middle mile infrastructure

Funding pool
\$1.00B

A program to expand middle mile infrastructure, to reduce the cost of connecting unserved and underserved areas.

PROGRAM HIGHLIGHTS

Middle mile infrastructure refers to the mid-section of Internet infrastructure that carries large amounts of data at high speeds over long distances and connects the "backbone" of Internet infrastructure to the "last mile", which connects to end users

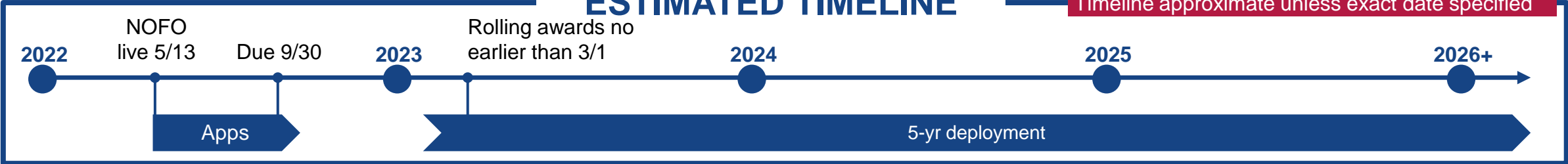
Entities eligible to apply include a wide variety of entities, incl. but not limited to government entities, utilities, companies, and non-profits that provide Internet services

Example uses of funds:

- ☆ Construction, improvement or acquisition of facilities and equipment
- ☆ Engineering design, permitting and work related to projects
- ☆ Personnel costs, including salaries and benefits
- ☆ Other costs necessary to program's activities

ESTIMATED TIMELINE

Timeline approximate unless exact date specified



Source: California Department of Technology, ["What is the middle mile?"](#)

Additional resources about the programs

- 1 Visit the InternetForAll.gov for additional information on federal funding programs
- 2 Engage with your State or territory regarding their plans to improve high-speed Internet access
- 3 Submit questions to InternetForAll@ntia.gov
- 4 Attend future NTIA webinars, including program-specific application guidance webinars for applicants

Thank you.



For More Information:

Please visit Treasury's Capital Projects Fund website treasury.gov/CPF

For General Inquiries and Assistance:

Please email
CapitalProjectsFund@treasury.gov

For Tribal Affairs Inquiries:

Please email TribalConsult@treasury.gov



Post-Roundtable Follow-ups

- Post-event questionnaire
- Event recording, slides presentation, and transcript will be posted on the BB4All portal

<https://broadbandforall.cdt.ca.gov/past-events/>

Upcoming Events

- Middle-Mile Advisory Committee Meeting – Friday, May 20
- Broadband Council Meeting – Wednesday, May 25

Please contact us with questions at broadbandforall@state.ca.gov

THANK YOU!



**BROADBAND
FOR ALL**